

HAMMOND, LOUISIANA

AL-6035 (FAA)

VOR RWY 31

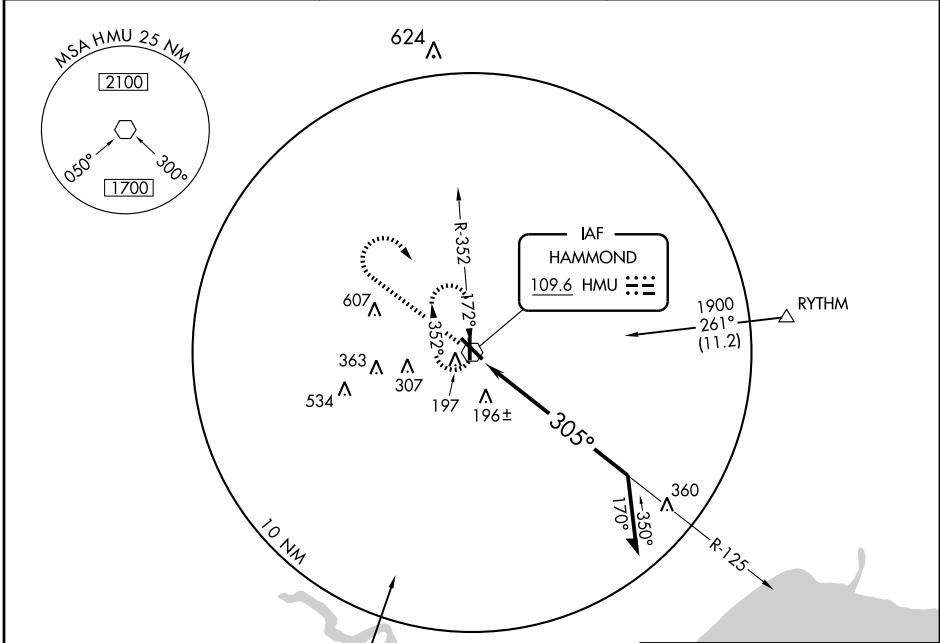
HAMMOND NORTHSORE RGNL (HDC)

VOR HMU 109.6	APP CRS 305°	Rwy Idg 5812
		TDZE 43
		Apt Elev 46

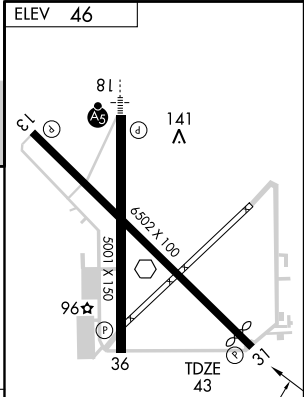
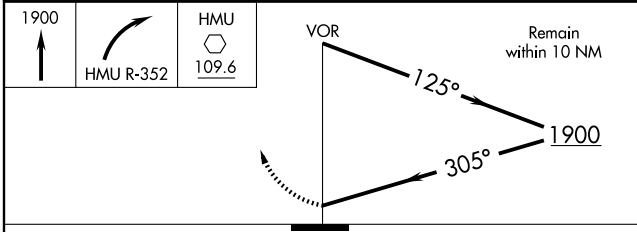
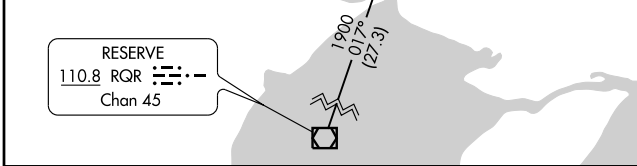
▼ If local altimeter setting not received, use Louis Armstrong
▲ NA New Orleans Intl altimeter setting and increase all MDAs 100 feet.

MISSED APPROACH: Climb to 1900, then right turn via HMU R-352 to HMU VOR and hold.

AWOS-3 118.325	NEW ORLEANS APP CON 119.3 350.35	UNICOM 122.7 (CTAF) ①
--------------------------	--------------------------------------------	----------------------------------------



RESERVE
110.8 RQR **①**
 Chan 45



CATEGORY	A	B	C	D
S-31	1000-1¼ 957 (1000-1¼)	1000-1½ 957 (1000-1½)	1000-3	957 (1000-3)
CIRCLING	1000-1¼ 954 (1000-1¼)	1000-1½ 954 (1000-1½)	1000-3	954 (1000-3)

REIL Rwy 13, 31 and 36 **①**
 MIRL Rwy 13-31 and 18-36 **①**

SC-4, 22 OCT 2009 to 19 NOV 2009

SC-4, 22 OCT 2009 to 19 NOV 2009

HAMMOND, LOUISIANA
Amdt 4 09127

30°31'N-90°25'W

HAMMOND NORTHSORE RGNL (HDC)
VOR RWY 31