



# VOR RWY 18

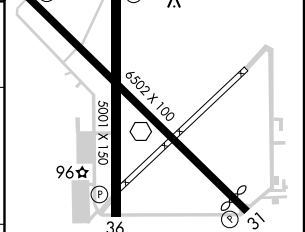
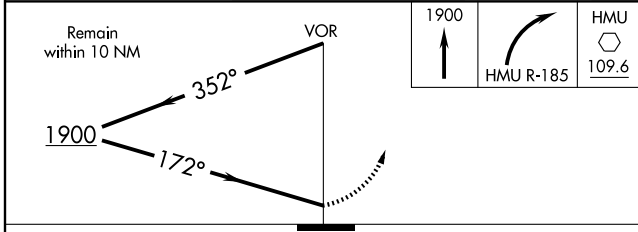
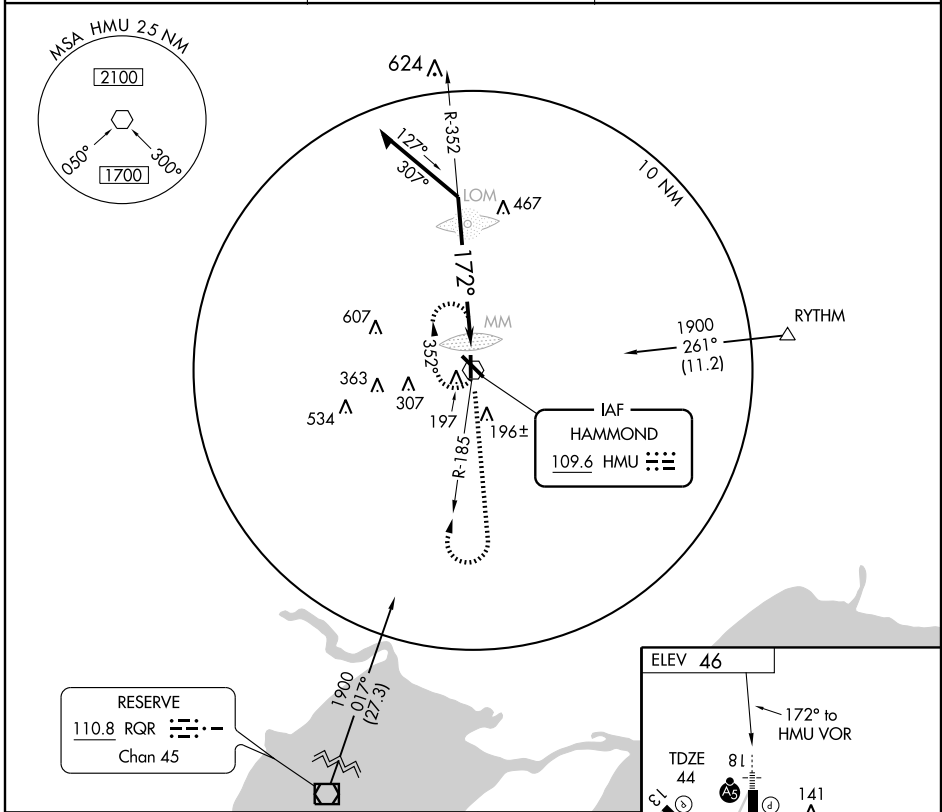
HAMMOND NORTHSHORE RGNL (HDC)

VOR HMU <b>109.6</b>	APP CRS <b>172°</b>	Rwy Idg TDZE Apt Elev	<b>5001</b> <b>44</b> <b>46</b>
-------------------------	------------------------	-----------------------------	---------------------------------------



**▼** If local altimeter setting not received, use Louis Armstrong New Orleans Intl altimeter setting and increase all MDAs 100 feet.  
**▲ NA**

**MALSRL**  
  
**MISSED APPROACH:** Climb to 1900 then right turn via HMU R-185 to HMU VOR and hold.

AWOS-3 <b>118.325</b>	NEW ORLEANS APP CON <b>119.3 350.35</b>	UNICOM <b>122.7 (CTAF)</b> 
--------------------------	--	---



CATEGORY	A	B	C	D
S-18	820-½ 776 (800-½)	820-¾ 776 (800-¾)	820-1¼ 776 (800-1¼)	820-2 776 (800-2)
CIRCLING	820-1 774 (800-1)	820-1¼ 774 (800-1¼)	820-2¼ 774 (800-2¼)	820-2½ 774 (800-2½)

REIL Rwy 13, 31 and 36   
 MIRL Rwy 13-31 and 18-36 

# VOR RWY 18

SC-4, 22 OCT 2009 to 19 NOV 2009

SC-4, 22 OCT 2009 to 19 NOV 2009