

RNAV (GPS) RWY 31

HAMMOND NORTHSORE RGNL (HDC)

APP CRS 311°	Rwy Idg 5812
	TDZE 43
	Apt Elev 46

▼ If local altimeter setting not received, use Louis Armstrong New Orleans Intl altimeter setting and increase all MDAs 100 feet. DME/DME RNP-0.3 NA.
▲ VDP NA when using Louis Armstrong New Orleans Intl altimeter setting.

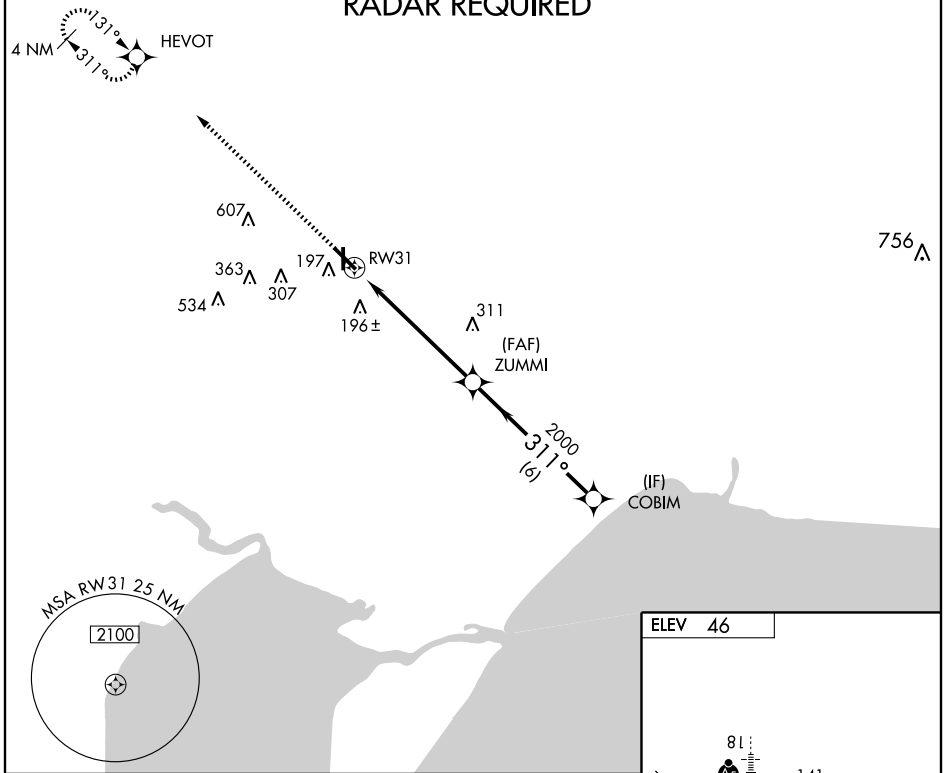
MISSED APPROACH: Climb to 2000 direct HEVOT and hold.

AWOS-3
118.325

NEW ORLEANS APP CON
119.3 350.35

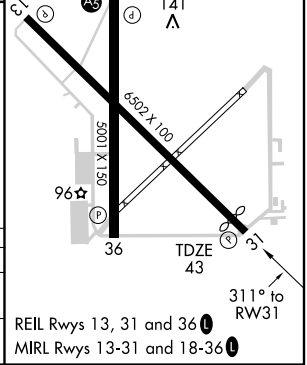
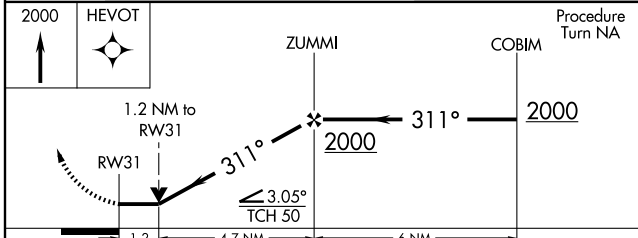
UNICOM
122.7 (CTAF) **0**

RADAR REQUIRED



SC-4, 22 OCT 2009 to 19 NOV 2009

SC-4, 22 OCT 2009 to 19 NOV 2009



CATEGORY	A	B	C	D
LNVA MDA	460-1	417 (500-1)	460-1¼	417 (500-1¼)
CIRCLING	500-1	454 (500-1)	500-1½ 454 (500-1½)	620-2 574 (600-2)