


RNAV (GPS) RWY 18
HAMMOND NORTHSORE RGNL (HDC)

APP CRS 177°	Rwy Idg 5001
	TDZE 44
	Apt Elev 46

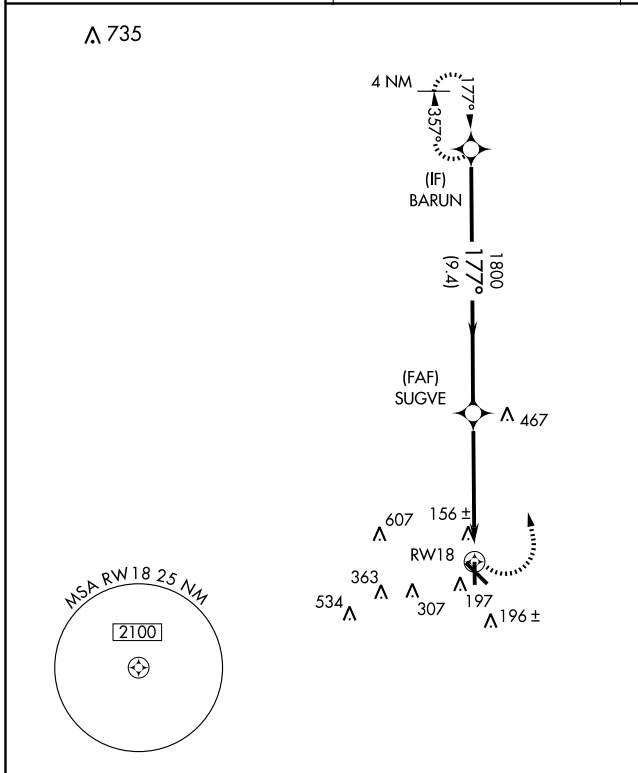
⚠ If local altimeter setting not received, use Louis Armstrong New Orleans Intl altimeter setting and increase all MDAs 100 feet. VDP NA when using Louis Armstrong New Orleans Intl altimeter setting. For inoperative MALSR, increase LNAV Cat D visibility to 1 1/4. DME/DME RNP-0.3 NA.

MALSR 
MISSED APPROACH: Climbing left turn to 1800 direct BARUN and hold.

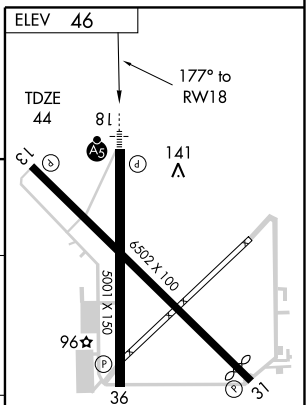
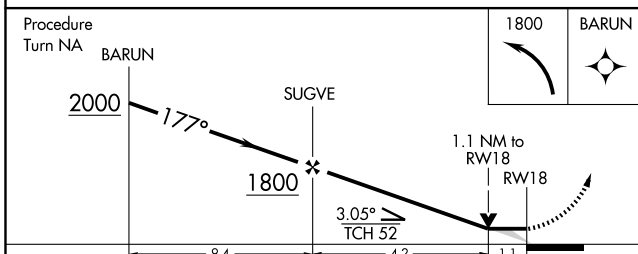
AWOS-3
118.325

NEW ORLEANS APP CON
119.3 350.35



UNICOM
122.7 (CTAF)



RADAR REQUIRED



CATEGORY	A	B	C	D
LNAV MDA	460-1/2	416 (500-1/2)	460-3/4 416 (500-3/4)	460-1 416 (500-1)
CIRCLING	500-1	454 (500-1)	500-1/2 454 (500-1/2)	620-2 574 (600-2)

REIL Rwy 13, 31 and 36 
MIRL Rwy 13-31 and 18-36 

SC-4, 22 OCT 2009 to 19 NOV 2009

SC-4, 22 OCT 2009 to 19 NOV 2009