

# ILS or LOC RWY 18

HAMMOND NORTHSORE RGNL (HDC)

LOC I-HPF <b>111.5</b>	APP CRS <b>177°</b>	Rwy Idg <b>5001</b>
		TDZE <b>44</b>
		Apt Elev <b>46</b>

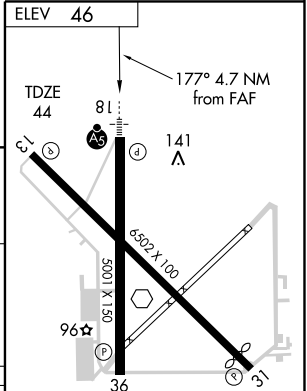
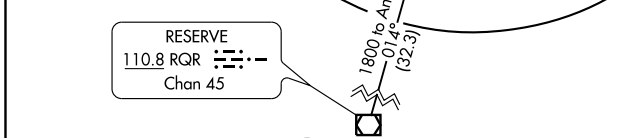
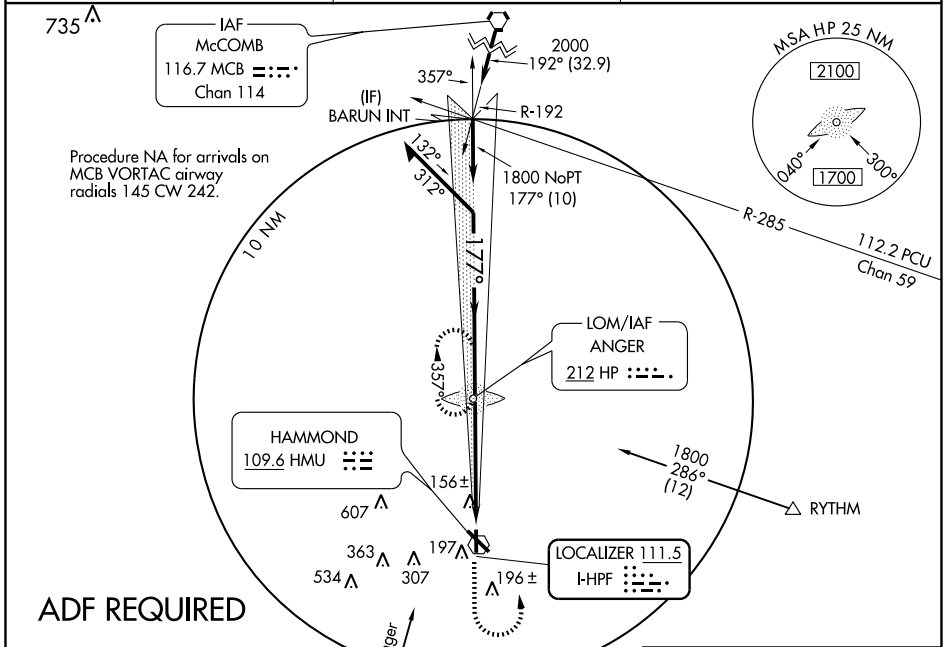
**▼** If local altimeter setting not received, use Louis Armstrong New Orleans Intl altimeter setting and increase all DA/MDAs 100 feet.

**▲ NA**

**MALSR**

**MISSED APPROACH:** Climb to 1800 then left turn via bearing 345° to ANGER LOM and hold.

AWOS-3 <b>118.325</b>	NEW ORLEANS APP CON <b>119.3 350.35</b>	UNICOM <b>122.7</b> (CTAF) <b>📻</b>
--------------------------	--	--



CATEGORY	A	B	C	D
S-ILS 18		244-1/2 200 (200-1/2)		
S-LOC 18		420-1/2 376 (400-1/2)	420-3/4 376 (400-3/4)	
CIRCLING	500-1 454 (500-1)	500-1 1/2 454 (500-1 1/2)	620-2 574 (600-2)	

REIL Rwys 13, 31 and 36 **📻**  
MIRL Rwys 13-31 and 18-36 **📻**

FAF to MAP 4.7 NM

Knots	60	90	120	150	180
Min:Sec	4:42	3:08	2:21	1:53	1:34

SC-4, 22 OCT 2009 to 19 NOV 2009

SC-4, 22 OCT 2009 to 19 NOV 2009