

PELLA, IOWA

AL-6034 (FAA)

RNAV (GPS) RWY 34

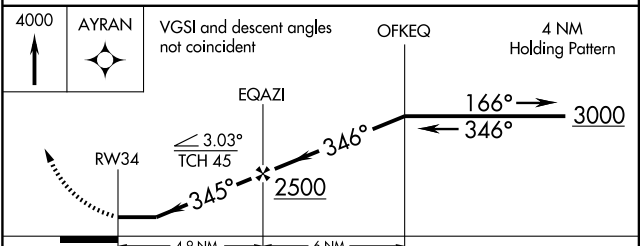
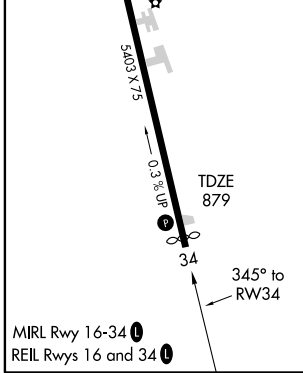
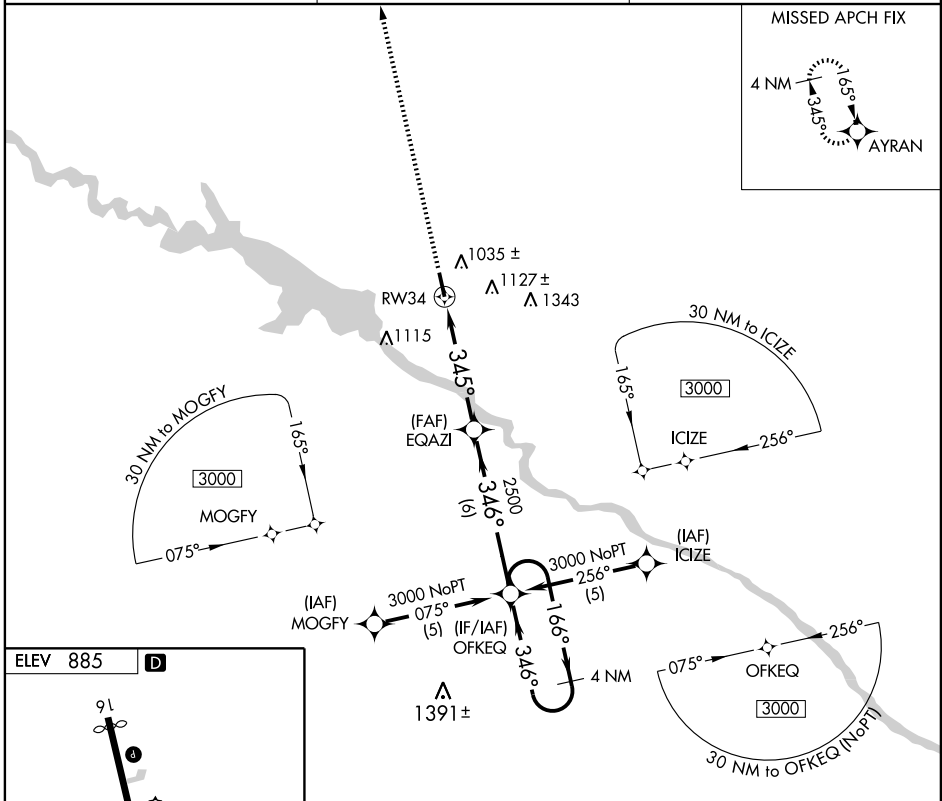
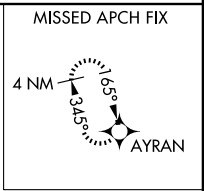
PELLA MUNI (PEA)

APP CRS 345°	Rwy Idg TDZE Apt Elev	5000 879 885
------------------------	-----------------------------	---

▼ DME/DME RNP -0.3 NA. Visibility reduction by helicopters NA.
▲ When local altimeter setting not received, use Knoxville altimeter setting and increase all MDA 40 feet.

MISSED APPROACH: Climb to 4000 direct AYRAN and hold.

AWOS-3 118.875	DES MOINES APP CON 123.9 307.15	UNICOM 122.8 (CTAF)
--------------------------	---	-------------------------------



CATEGORY	A	B	C	D
LNAV MDA	1320-1	441 (500-1)	1320-1¼ 441 (500-1¼)	NA
CIRCLING	1380-1	495 (500-1)	1440-1½ 555 (600-1½)	NA

PELLA, IOWA
Amdt 1 08325

41°24'N-92°57'W

RNAV (GPS) RWY 34

NC-3, 22 OCT 2009 to 19 NOV 2009

NC-3, 22 OCT 2009 to 19 NOV 2009