

# RNAV (GPS) RWY 16

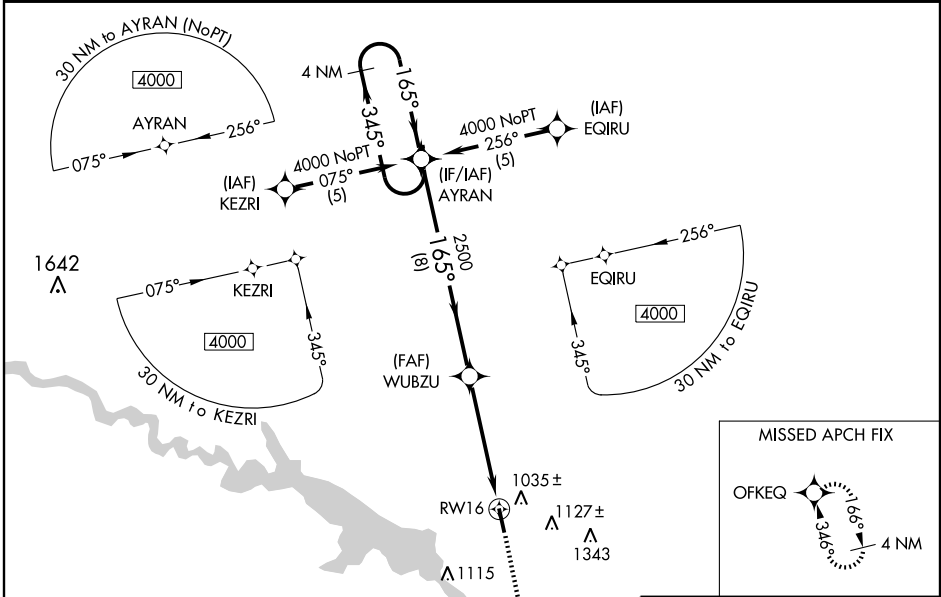
PELLA MUNI (PEA)

WAAS CH <b>77610</b> <b>W16A</b>	APP CRS <b>165°</b>	Rwy Idg TDZE Apt Elev	<b>5000</b> <b>885</b> <b>885</b>
--	------------------------	-----------------------------	---

**⚠** DME/DME RNP -0.3 NA. Visibility reduction by helicopters NA.  
**⚠** Baro-VNAV NA when using Knoxville altimeter setting.  
 For uncompensated Baro-VNAV systems, LNAV/VNAV NA below -1.6°C (4°F) or above 54°C (130°F).  
 When local altimeter setting not received, use Knoxville altimeter setting and increase all DA 29 feet and all MDA 40 feet.

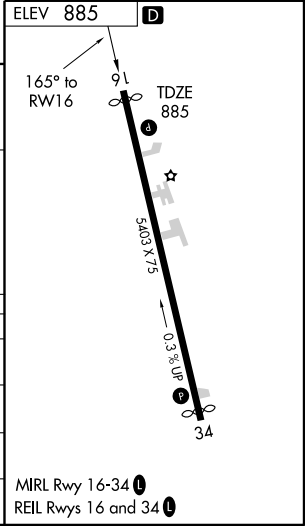
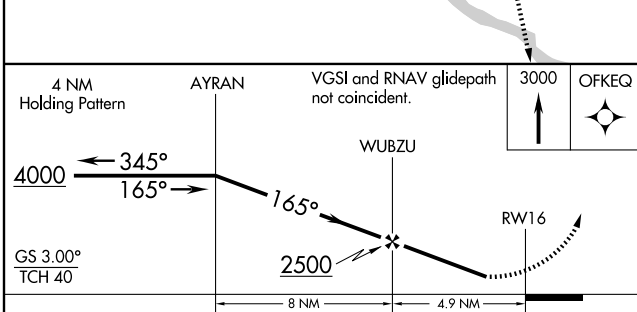
MISSED APPROACH: Climb to 3000 direct OFKEQ and hold.

AWOS-3 <b>118.875</b>	DES MOINES APP CON <b>123.9 307.15</b>	UNICOM <b>122.8 (CTAF) ①</b>
--------------------------	---	---------------------------------



NC-3, 22 OCT 2009 to 19 NOV 2009

NC-3, 22 OCT 2009 to 19 NOV 2009



CATEGORY	A	B	C	D
LPV DA	1232-1¼	347 (400-1¼)		NA
LNAV/VNAV DA	1288-1½	403 (500-1½)		NA
LNAV MDA	1360-1	475 (500-1)	1360-1¼ 475 (500-1¼)	NA
CIRCLING	1380-1	495 (500-1)	1440-1½ 555 (600-1½)	NA

MIRL Rwy 16-34 ①  
 REIL Rwy 16 and 34 ①