

PELLA, IOWA

AL-6034 (FAA)

# NDB RWY 34

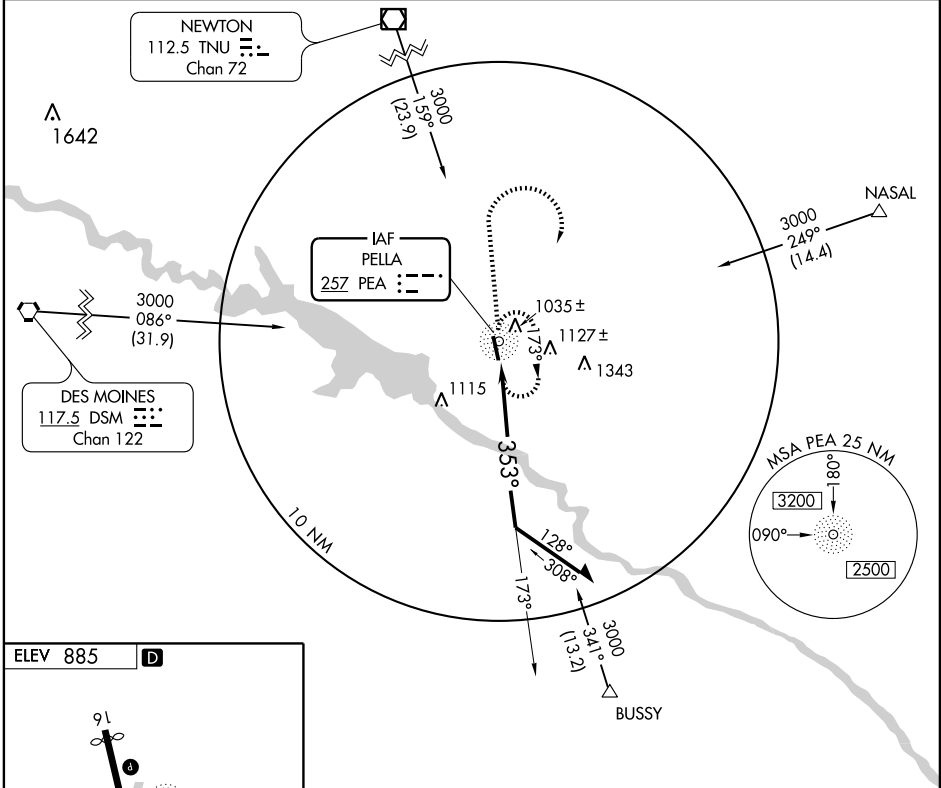
PELLA MUNI (PEA)

NDB PEA <b>257</b>	APP CRS <b>353°</b>	Rwy Idg <b>5000</b>
	TDZE <b>880</b>	
	Apt Elev <b>885</b>	

**▽** When local altimeter setting not received, use Knoxville altimeter setting and increase all MDA 40 feet.

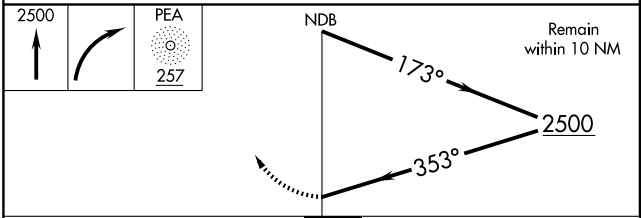
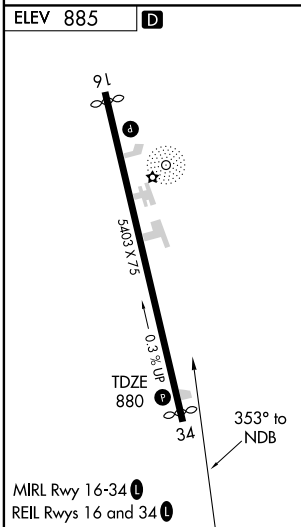
**MISSED APPROACH:** Climb to 2500 then right turn direct PEA NDB and hold.

AWOS-3 <b>118.875</b>	DES MOINES APP CON <b>123.9 307.15</b>	UNICOM <b>122.8 (CTAF) 0</b>
--------------------------	---	---------------------------------



NC-3, 22 OCT 2009 to 19 NOV 2009

NC-3, 22 OCT 2009 to 19 NOV 2009



CATEGORY	A	B	C	D
S-34	1420-1	540 (600-1)	1420-1½ 540 (600-1½)	NA
CIRCLING	1420-1	535 (600-1)	1440-1½ 555 (600-1½)	NA

PELLA, IOWA  
Amdt 7C 09267

41°24'N - 92°57'W

# PELLA MUNI (PEA) NDB RWY 34