

RNAV (GPS) RWY 14

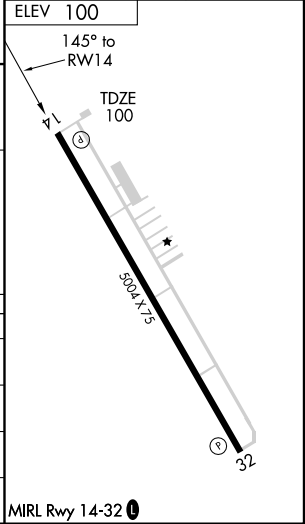
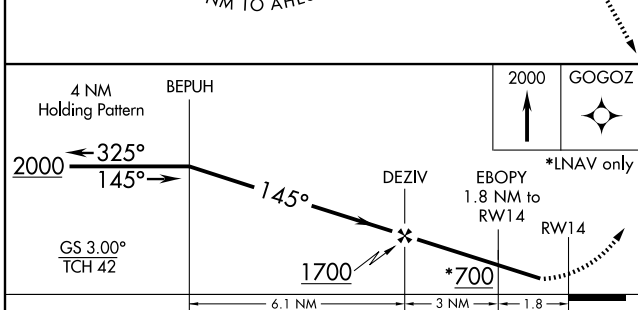
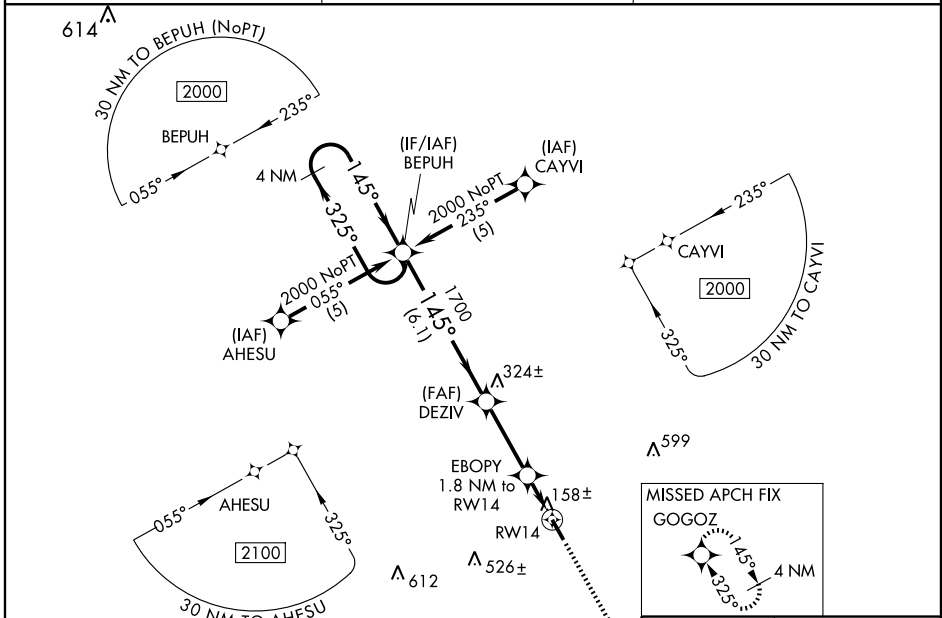
WHARTON RGNL (A.R.M)

WAAS CH 77714 W14A	APP CRS 145°	Rwy Idg TDZE Apt Elev	5004 100 100
--	------------------------	-----------------------------	---

⚠ Baro-VNAV NA when using Victoria altimeter setting. For uncompensated Baro-VNAV systems, LNAV/VNAV NA below -15°C (5°F) or above 54°C (130°F). DME/DME RNP-0.3 NA.
⚠ Visibility reduction by helicopters NA. When local altimeter setting not received, use Victoria altimeter setting and increase all DA 110 feet and all MDA 120 feet, increase LPV visibility ½ mile all Cats, LNAV/VNAV visibility ¼ mile all Cats, LNAV Cat C visibility ¼ mile.

MISSED APPROACH:
Climb to 2000 direct GOGOZ and hold.

AWOS-3 118.475	HOUSTON CENTER 128.6 360.8	UNICOM 122.7 (CTAF) ①
--------------------------	--------------------------------------	---------------------------------



CATEGORY	A	B	C	D
LPV DA	396-1	296 (300-1)		NA
LNAV/VNAV DA	428-1¼	328 (400-1¼)		NA
LNAV MDA	420-1	320 (400-1)		NA
CIRCLING	500-1 400 (400-1)	560-1 460 (500-1)	560-1½ 460 (500-1½)	NA

SC-5, 22 OCT 2009 to 19 NOV 2009

SC-5, 22 OCT 2009 to 19 NOV 2009