

WHARTON, TEXAS

AL-6032 (FAA)

NDB RWY 32

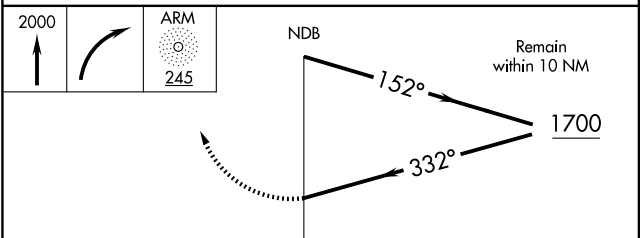
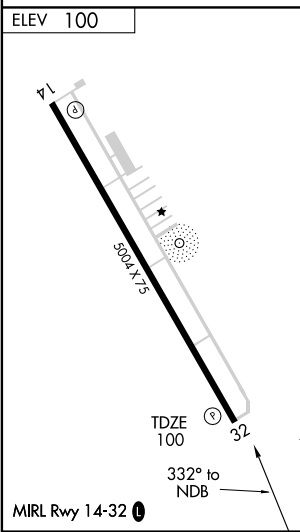
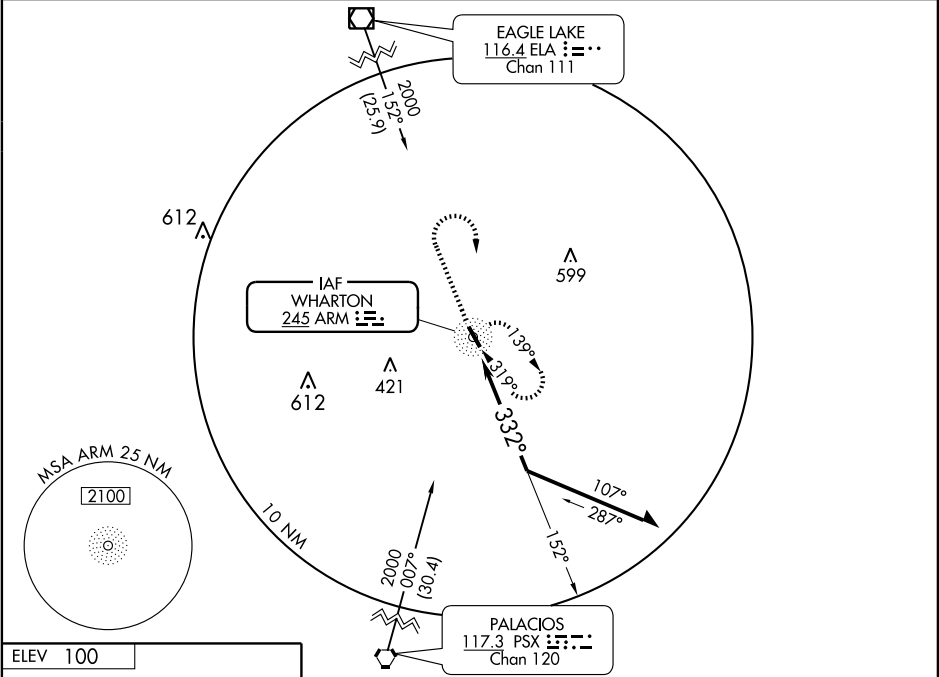
WHARTON RGNL (A.R.M)

NDB ARM 245	APP CRS 332°	Rwy Idg 5004
		TDZE 100
		Apt Elev 100

Obtain local altimeter setting on CTAF; when not received use Victoria Regional altimeter setting.

 MISSED APPROACH: Climb to 2000 then right turn direct ARM NDB and hold.

AWOS-3 118.475	HOUSTON CENTER 128.6 360.8	UNICOM 122.7 (CTAF)
--------------------------	--------------------------------------	-------------------------------



CATEGORY	A	B	C	D
S-32	560-1	460 (500-1)	560-1¼ 460 (500-1¼)	NA
CIRCLING	560-1	460 (500-1)	560-1½ 460 (500-1½)	NA
VICTORIA ALTIMETER SETTING MINIMUMS				
S-32	680-1	580 (600-1)	680-1½ 580 (600-1½)	NA
CIRCLING	680-1	580 (600-1)	680-1½ 580 (600-1½)	NA

WHARTON, TEXAS
Orig 09239

29°15'N-96°09'W

WHARTON RGNL (A.R.M)
NDB RWY 32

SC-5, 22 OCT 2009 to 19 NOV 2009

SC-5, 22 OCT 2009 to 19 NOV 2009