

DAVIS, CALIFORNIA

AL-6030 (FAA)

# RNAV (GPS) RWY 17

DAVIS/UNIVERSITY (EDU)

APP CRS <b>167°</b>	Rwy Idg <b>3176</b>
	TDZE <b>64</b>
	Apt Elev <b>69</b>

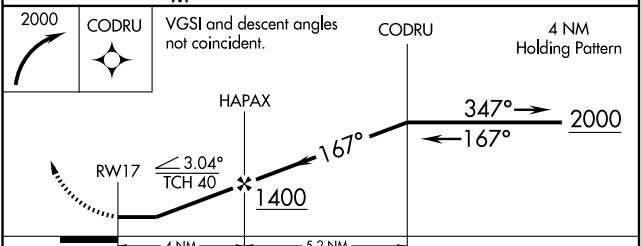
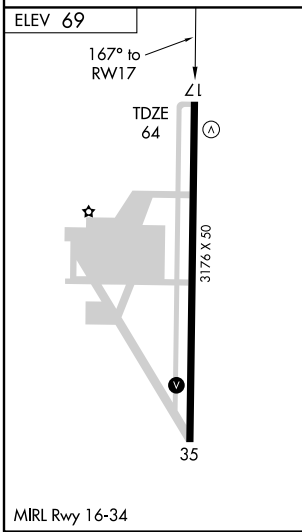
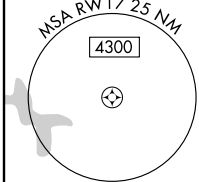
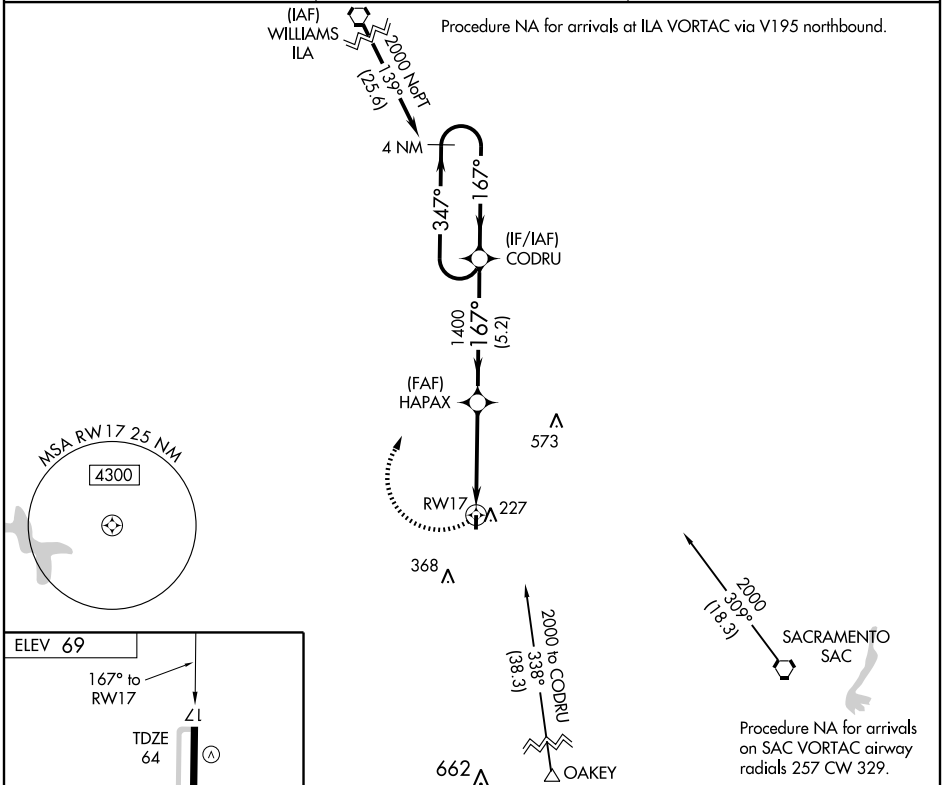
**NA** DME/DME RNP-0.3 NA.  
 Visibility reduction by helicopters NA.  
 When local altimeter setting not received, use Travis AFB altimeter setting and increase all MDA 60 feet.

MISSED APPROACH: Climbing right turn to 2000 direct CODRU and hold.

AWOS-3  
**119.025**

TRAVIS APP CON  
**126.6 291.0**

UNICOM  
**123.075 (CTAF) 0**



CATEGORY	A	B	C	D
LNAV MDA	520-1	456 (500-1)	NA	
CIRCLING	580-1	511 (600-1)	NA	

DAVIS, CALIFORNIA  
 Orig 09183

38° 32'N - 121° 47'W

# RNAV (GPS) RWY 17

SW-2, 22 OCT 2009 to 19 NOV 2009

SW-2, 22 OCT 2009 to 19 NOV 2009