

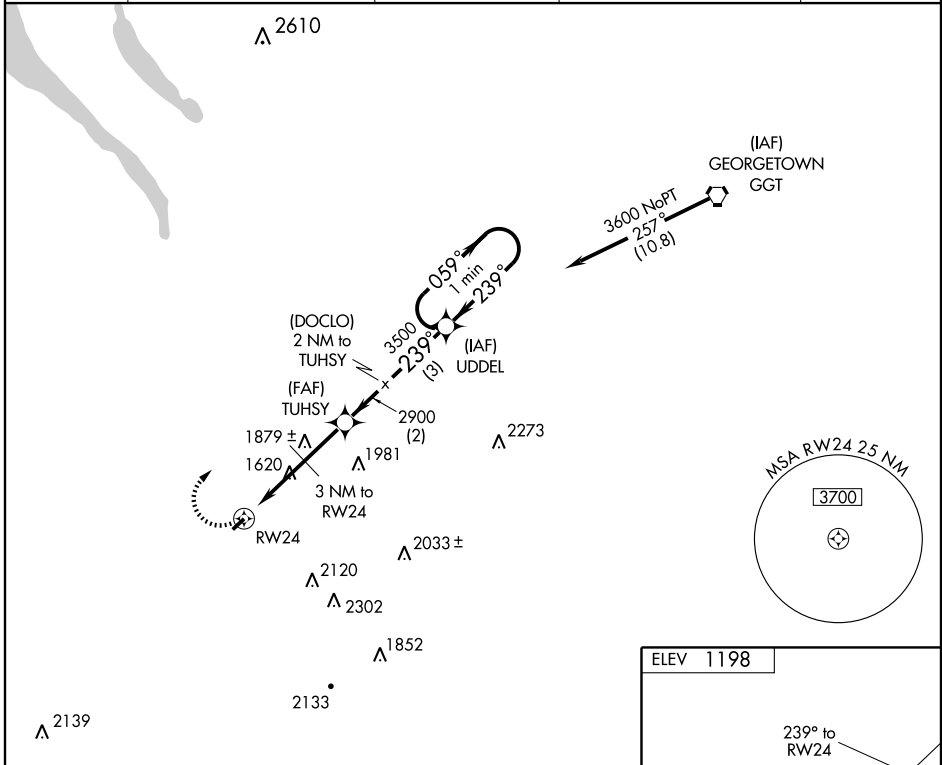
# GPS RWY 24

CORTLAND COUNTY-CHASE FIELD (NØ3)

APP CRS	Rwy Idg	<b>3400</b>
<b>239°</b>	TDZE	<b>1192</b>
	Apt Elev	<b>1198</b>

MISSED APPROACH: Climbing right turn to 3600 direct UDDEL WP and hold.

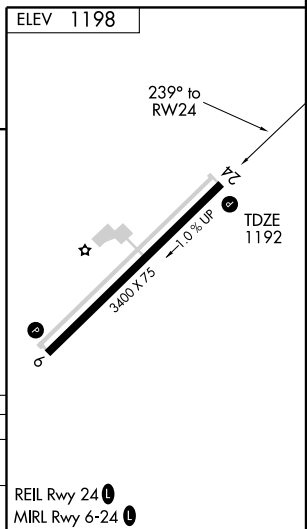
AWOS-3 <b>132.225</b>	BINGHAMTON APP CON * <b>118.6 257.625</b>	ELMIRA APP CON * <b>124.3 257.8 (W)</b>	SYRACUSE APP CON <b>126.125 269.125 (N-NE)</b>	UNICOM <b>122.8 (CTAF)</b>
--------------------------	--	--	---	-------------------------------



NE-2, 22 OCT 2009 to 19 NOV 2009

NE-2, 22 OCT 2009 to 19 NOV 2009

3600	UDDEL			



CATEGORY	A	B	C	D
S-24	1880-1	688 (700-1)	1880-2 688 (700-2)	NA
CIRCLING	1940-1 742 (800-1)	1940-1¼ 742 (800-1¼)	1980-2¼ 782 (800-2¼)	NA

REIL Rwy 24 (L)  
MIRL Rwy 6-24 (L)

# GPS RWY 24