

WAAS CH <b>53615</b> <b>W29A</b>	APP CRS <b>284°</b>	Rwy ldg TDZE Apt Elev	<b>5500</b> <b>96</b> <b>107</b>
--	------------------------	-----------------------------	--

# RNAV (GPS) RWY 29

JESUP-WAYNE COUNTY (JES)

**NA** Baro-VNAV NA when using Savannah/Hilton Head Intl altimeter setting. For uncompensated Baro-VNAV systems, LNAV/VNAV NA below -15°C (5°F) or above 48°C (118°F). DME/DME RNP -0.3 NA. Visibility reduction by helicopters NA. When local altimeter setting not received, use Savannah/Hilton Head Intl altimeter setting and increase LPV DA to 485, LNAV/VNAV DA to 542, and all MDA 140 feet, increase LPV and LNAV/VNAV all Cats and Circling Cat D visibility ½ mile, increase LNAV Cat C and D visibility ¼ mile. Inoperative table does not apply.

MALSF

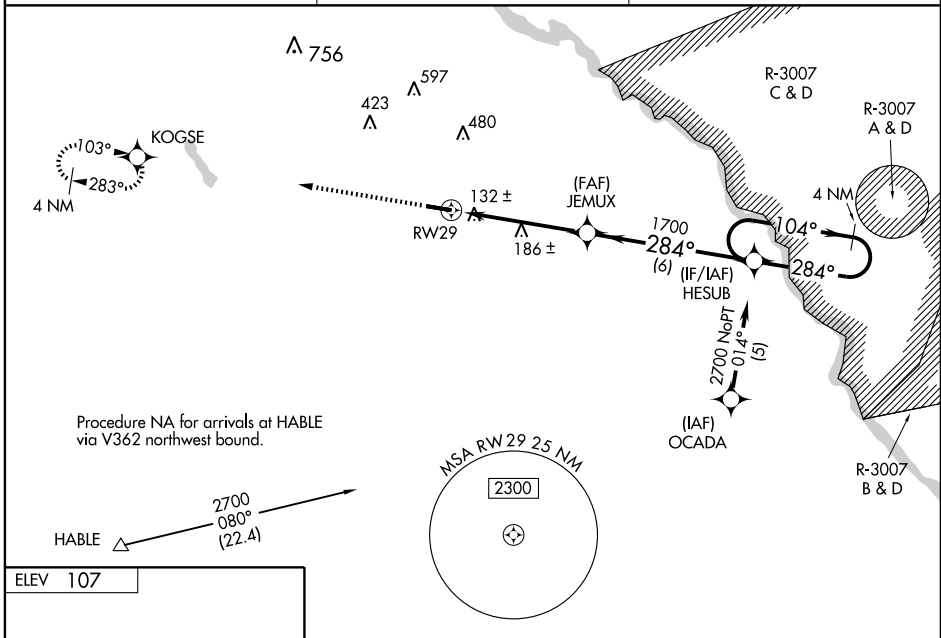


MISSED APPROACH: Climb to 2700 direct KOGSE and hold.

AWOS-A  
**340.0**

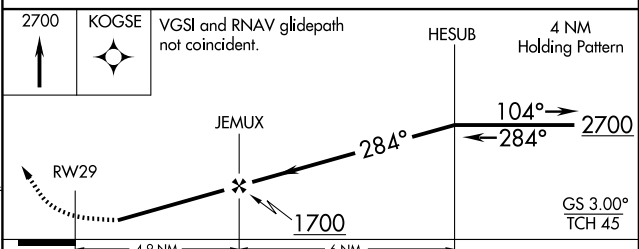
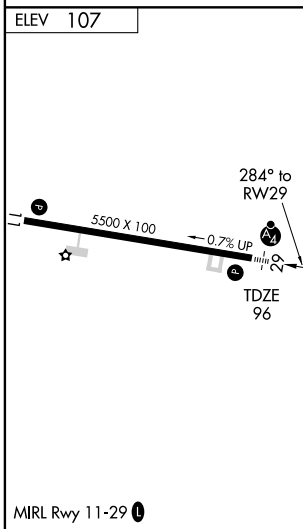
JACKSONVILLE CENTER  
**126.75 277.4**

UNICOM  
**122.8 (CTAF)**



SE-4, 22 OCT 2009 to 19 NOV 2009

SE-4, 22 OCT 2009 to 19 NOV 2009



CATEGORY	A	B	C	D
LPV DA		364-1	268 (300-1)	
LNAV/VNAV DA		421-1¼	325 (400-1¼)	
LNAV MDA		440-1 344 (400-1)		440-1¼ 344 (400-1¼)
CIRCLING	500-1 393 (400-1)	560-1 453 (500-1)	560-1½ 453 (500-1½)	780-2¼ 673 (700-2¼)