

JESUP, GEORGIA

AL-6028 (FAA)

09295

NDB JES 340	APP CRS 276°	Rwy Idg 5500
		TDZE 96
		Apt Elev 107

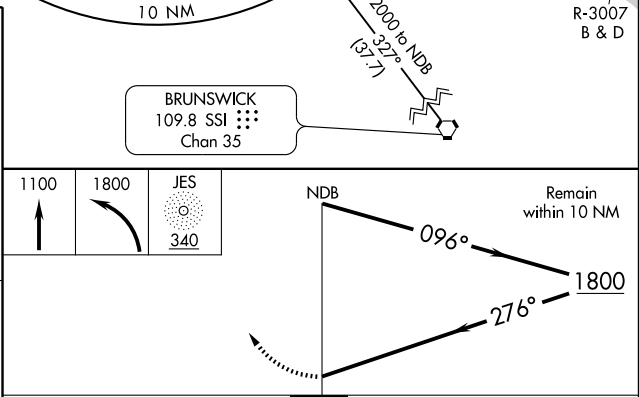
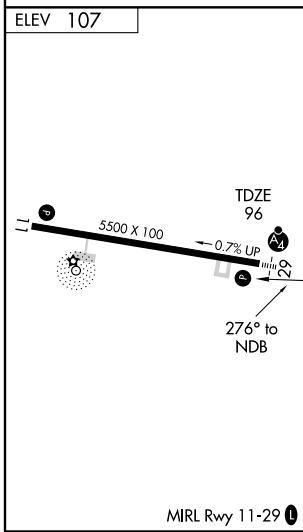
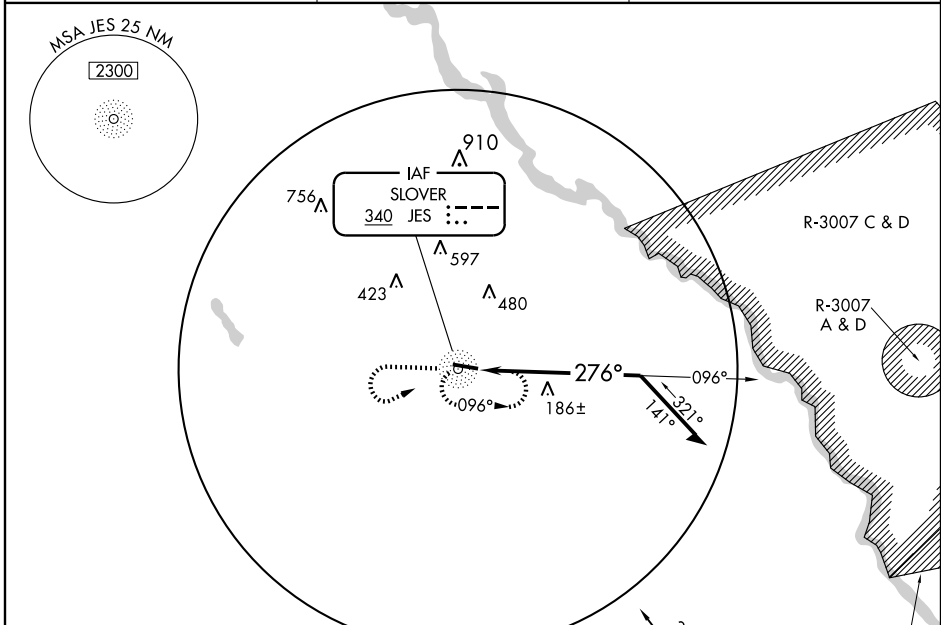
NDB RWY 29

JESUP-WAYNE COUNTY (JES)

NA Visibility reduction by helicopters NA. When local altimeter setting not received, use Savannah/Hilton Head Intl altimeter setting and increase all MDA 140 feet, S-29 Cat C and D visibility 1/4 mile, and Circling Cat D visibility 1/2 mile. Inoperative table does not apply to S-29 Cat C.

MALSF MISSED APPROACH: Climb to 1100 then climbing left turn to 1800 direct JES NDB and hold, continue climb-in-hold to 1800.

AWOS-A 340.0	JACKSONVILLE CENTER 126.75 277.4	UNICOM 122.8 (CTAF)
------------------------	--	-------------------------------



CATEGORY	A	B	C	D
S-29	540-3/4	444 (500-3/4)	540-1 1/4 444 (500-1 1/4)	540-1 1/2 444 (500-1 1/2)
CIRCLING	540-1 433 (500-1)	560-1 453 (500-1)	560-1 1/2 453 (500-1 1/2)	780-2 1/4 673 (700-2 1/4)

JESUP, GEORGIA
Amdt 3 22OCT09

31°33'N-81°53'W

JESUP-WAYNE COUNTY (JES)
NDB RWY 29

SE-4, 22 OCT 2009 to 19 NOV 2009

SE-4, 22 OCT 2009 to 19 NOV 2009