

JESUP, GEORGIA

AL-6028 (FAA)

09295

| | | |
|-----------------------|------------------------|------------------------|
| NDB JES 340 | APP CRS 108° | Rwy Idg 5500 |
| | | TDZE 107 |
| | | Apt Elev 107 |

NDB RWY 11

JESUP-WAYNE COUNTY (JES)

▽ Visibility reduction by helicopters NA. When local altimeter setting not received, use Savannah/Hilton Head Intl altimeter setting and increase all MDA 140 feet, S-11 Cat C and D and Circling Cat D visibility ½ mile and Circling Cat C visibility ¼ mile.

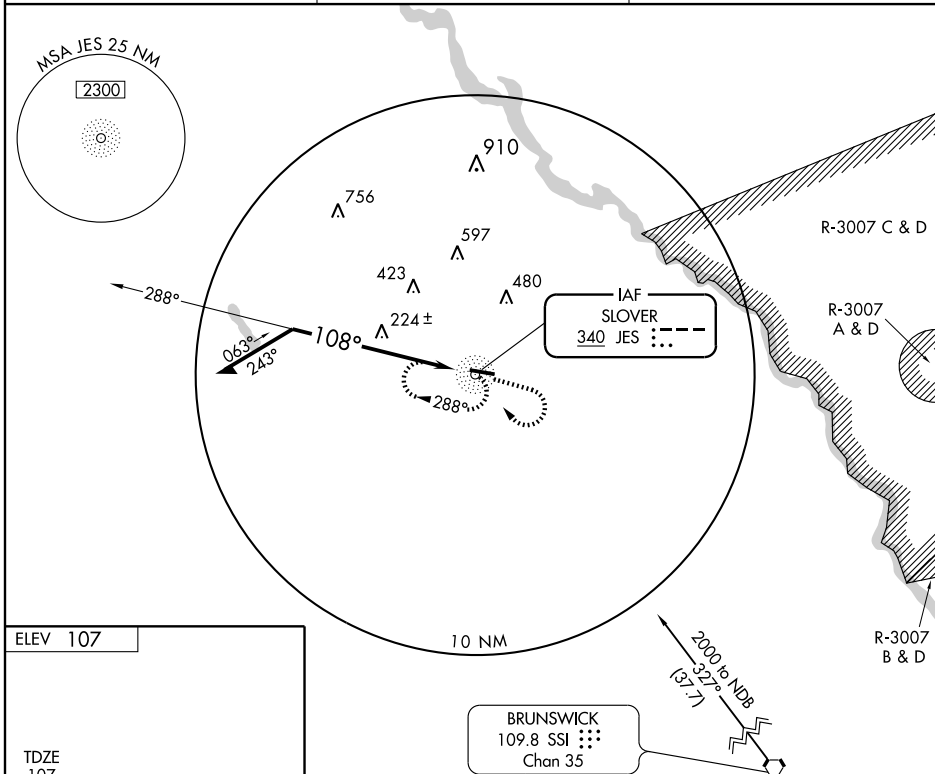
△ NA

MISSED APPROACH: Climb to 1100 then climbing right turn to 1800 direct JES NDB and hold, continue climb-in-hold to 1800.

AWOS-A
340.0

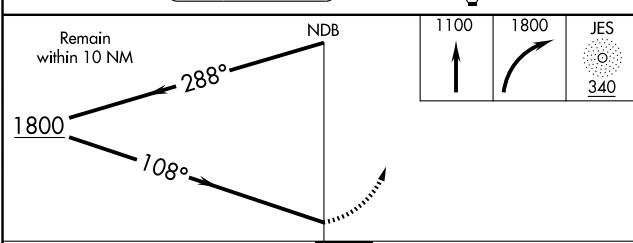
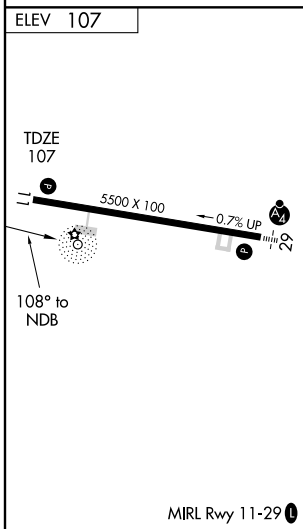
JACKSONVILLE CENTER
126.75 277.4

UNICOM
122.8 (CTAF) 0



SE-4, 22 OCT 2009 to 19 NOV 2009

SE-4, 22 OCT 2009 to 19 NOV 2009



| CATEGORY | A | B | C | D |
|----------|-------|-------------|------------------------|------------------------|
| S-11 | 580-1 | 473 (500-1) | 580-1¼ 473 (500-1¼) | 580-1½ 473 (500-1½) |
| CIRCLING | 580-1 | 473 (500-1) | 580-1½ 473 (500-1½) | 780-2¼ 673 (700-2¼) |

JESUP, GEORGIA
Amdt 2 22OCT09

31°33'N-81°53'W

JESUP-WAYNE COUNTY (JES)

NDB RWY 11