

# RNAV (GPS) RWY 17

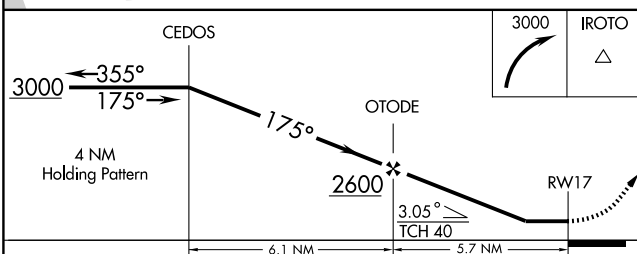
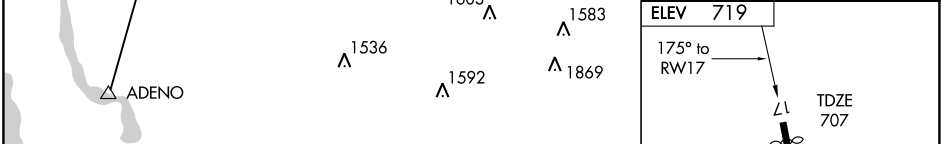
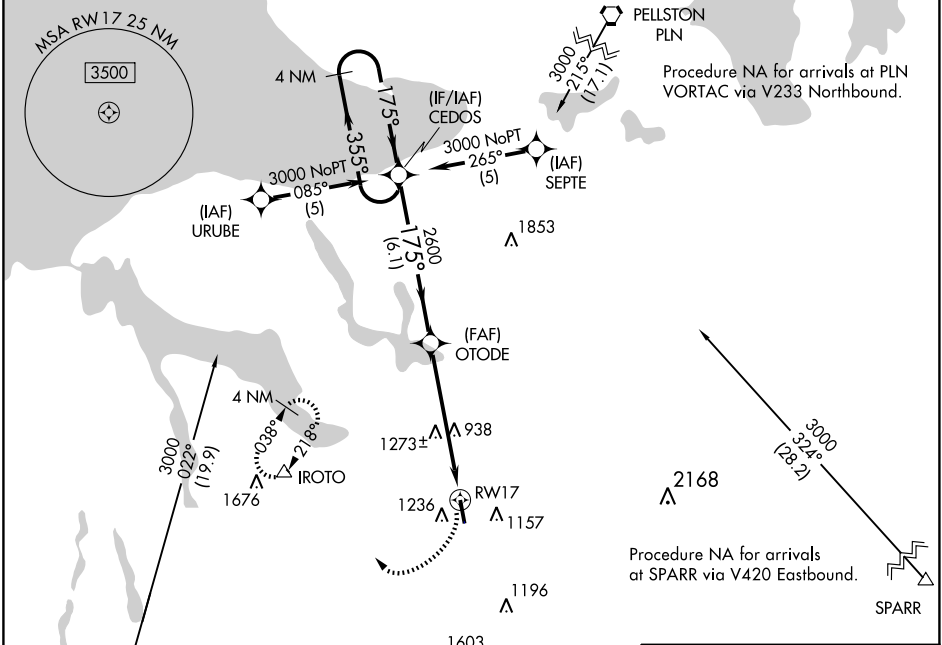
BOYNE FALLS/ BOYNE MOUNTAIN (BFA)

APP CRS	Rwy Idg	<b>4887</b>
<b>175°</b>	TDZE	<b>707</b>
	Apt Elev	<b>719</b>

**⚠** Circling NA west of Rwy 17-35. DME/DME RNP-0.3 NA. Use Bellaire altimeter setting; when not received, use Pellston altimeter setting and increase all MDAs 20 feet and increase LNAV CATs A, C, and D visibility ¼ mile, and Circling CATs A and C ¼ mile.

**⚠** MISSED APPROACH: Climbing right turn to 3000 direct IROTO and hold.

MINNEAPOLIS CENTER <b>134.6 354.05</b>	UNICOM <b>122.8 (CTAF)</b>	<b>122.85</b>
---	-------------------------------	---------------



CATEGORY	A	B	C	D
LNAV MDA	1580 - 1 873 (900-1)	1580 - 1¼ 873 (900-1¼)	1580 - 2½ 873 (900-2½)	1580 - 2¾ 873 (900-2¾)
CIRCLING	1580 - 1 861 (900-1)	1580 - 1¼ 861 (900-1¼)	1580 - 2½ 861 (900-2½)	1640 - 3 921 (1000-3)

ELEV 719	TDZE 707
175° to RWY 17	5.87 x 60
0.3% climb	35
REIL Rwy 17 and 35	LURL Rwy 17-35

EC-1, 22 OCT 2009 to 19 NOV 2009

EC-1, 22 OCT 2009 to 19 NOV 2009