

STEPHENVILLE, TEXAS

AL-6026 (FAA)

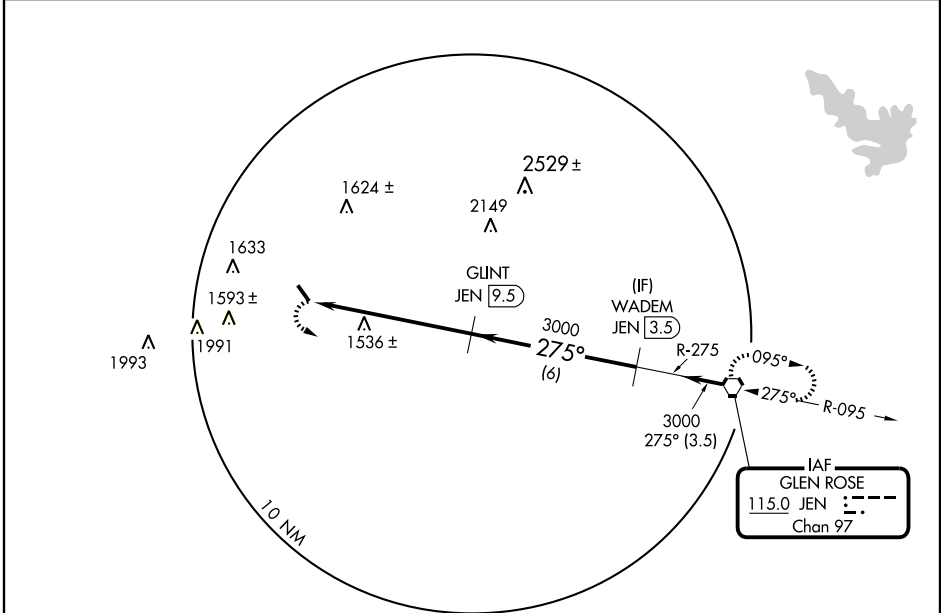
VORTAC JEN 115.0 Chan 97	APP CRS 275°	Rwy Idg TDZE Apt Elev	N/A N/A 1321
---------------------------------------	------------------------	-----------------------------	---------------------------

VOR/DME-A

STEPHENVILLE/CLARK FIELD MUNI (SEP)

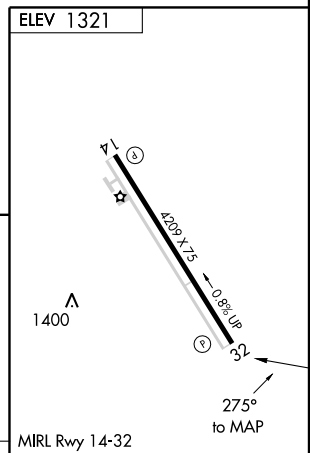
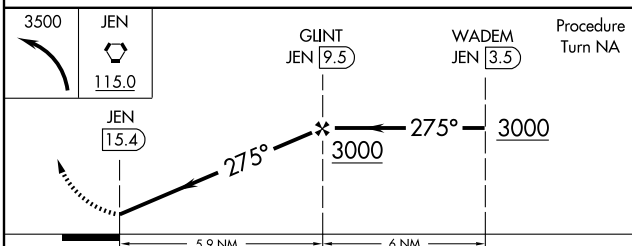
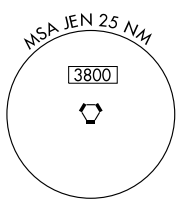
▽ MISSED APPROACH: Climbing left turn to 3500 direct JEN VORTAC and hold.

AWOS-3 118.075	FORT WORTH CENTER 127.15 314.0	UNICOM 122.8 (CTAF)
--------------------------	--	-------------------------------



SC-2, 22 OCT 2009 to 19 NOV 2009

SC-2, 22 OCT 2009 to 19 NOV 2009



CATEGORY	A	B	C	D	Knots	60	90	120	150	180
	1820-1 499 (500-1)		1820-1½ 499 (500-1½)			Min:Sec				
CIRCLING	1820-1 499 (500-1)		1820-1½ 499 (500-1½)		1960-2 639 (700-2)					

STEPHENVILLE, TEXAS
Amdt 1 08213

32°13'N-98°11'W

STEPHENVILLE/CLARK FIELD MUNI (SEP)
VOR/DME-A