

STEPHENVILLE, TEXAS

AL-6026 (FAA)

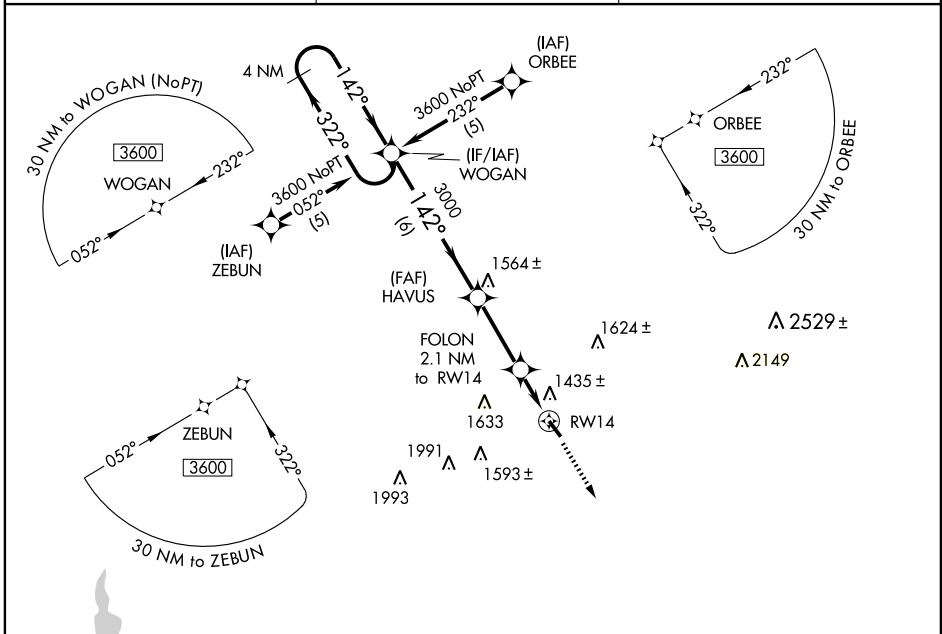
RNAV (GPS) RWY 14

STEPHENVILLE/CLARK FIELD MUNI (SEP)

APP CRS	Rwy Idg	4209
142°	TDZE	1321
	Apt Elev	1321

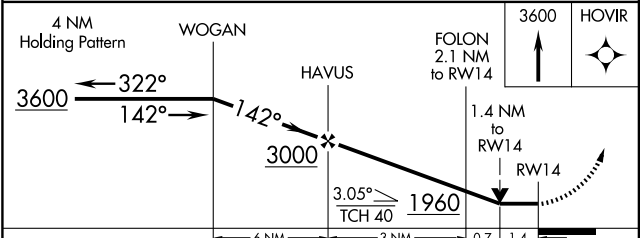
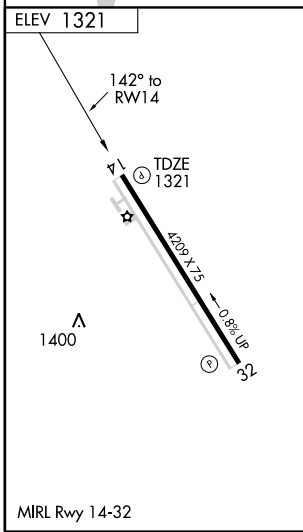
DME/DME RNP-0.3 NA.	MISSED APPROACH: Climb to 3600 direct HOVIR and hold.
---------------------	---

AWOS-3 118.075	FORT WORTH CENTER 127.15 314.0	UNICOM 122.8 (CTAF)
--------------------------	--	-------------------------------



SC-2, 22 OCT 2009 to 19 NOV 2009

SC-2, 22 OCT 2009 to 19 NOV 2009



CATEGORY	A	B	C	D
LNAV MDA	1820-1	499 (500-1)	1820-1¼ 499 (500-1¼)	1820-1½ 499 (500-1½)
CIRCLING	1820-1	499 (500-1)	1820-1½ 499 (500-1½)	1960-2 639 (700-2)

STEPHENVILLE, TEXAS
Orig 08213

32°13'N-98°11'W

STEPHENVILLE/CLARK FIELD MUNI (SEP)
RNAV (GPS) RWY 14