

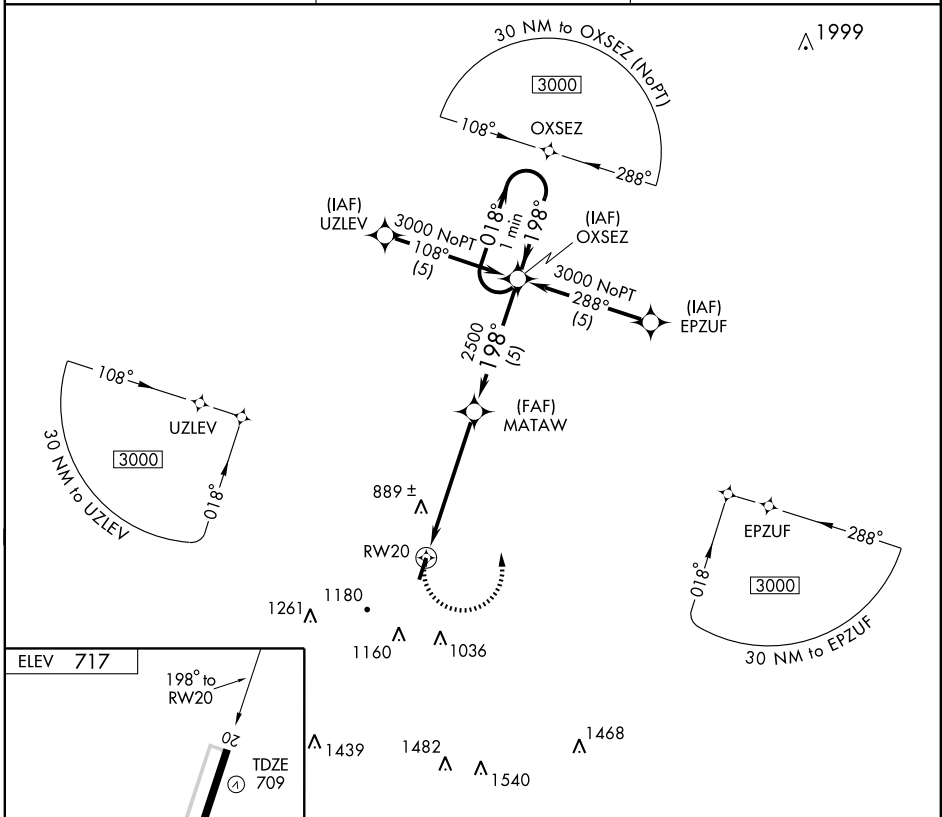
GPS RWY 20

LEWISBURG/ELLINGTON (LUG)

APP CRS	Rwy Idg	5002
198°	TDZE	709
	Apt Elev	717

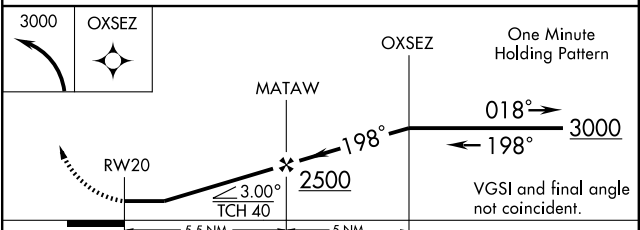
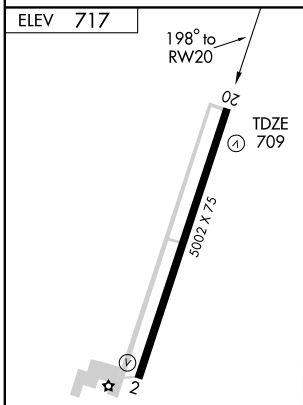
▲ NA MISSED APPROACH: Climbing left turn to 3000 direct OXSEZ WP and hold.

AWOS-3 135.775	MEMPHIS CENTER 126.75 353.5	UNICOM 122.8 (CTAF)
--------------------------	---------------------------------------	-------------------------------



SE-1, 22 OCT 2009 to 19 NOV 2009

SE-1, 22 OCT 2009 to 19 NOV 2009



CATEGORY	A	B	C	D
S-20	1140-1	431 (500-1)	1140-1¼ 431 (500-1¼)	NA
CIRCLING	1340-1	623 (700-1)	1520-2¼ 803 (900-2¼)	NA