

VORTAC PXR 115.6 Chan 103	APP CRS 330°	Rwy ldg TDZE Apt Elev N/A N/A 1180
---	------------------------	--

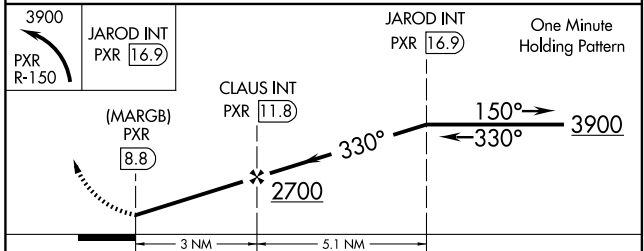
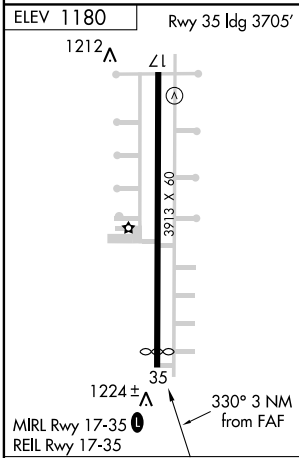
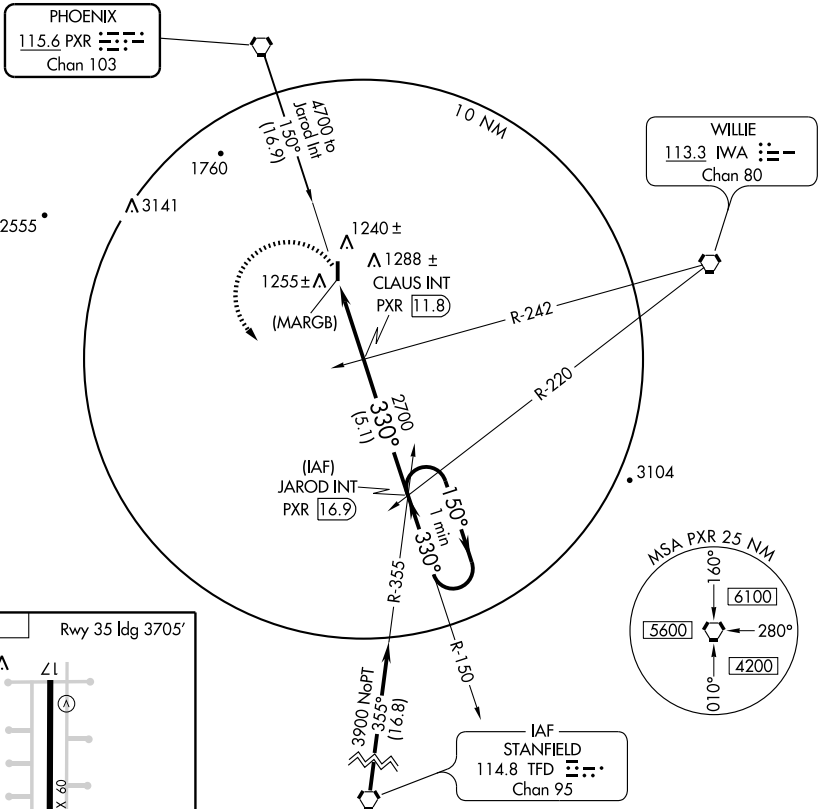
VOR or GPS-A
CHANDLER/STELLAR AIRPARK (P19)

NA Use Phoenix Sky Harbor Intl altimeter setting. Procedure not authorized at night. **MISSED APPROACH:** Climbing left turn to 3900 via PXR R-150 to JAROD Int/PXR 16.9 DME and hold.

PHOENIX APP CON 123.7 363.0	CTAF 122.9
---------------------------------------	----------------------

SW-4, 22 OCT 2009 to 19 NOV 2009

SW-4, 22 OCT 2009 to 19 NOV 2009



FAF to MAP 3 NM					
Knots	60	90	120	150	180
Min:Sec	3:00	2:00	1:30	1:12	1:00
CATEGORY	A	B	C	D	
CIRCLING	1600-1 420 (500-1)	1640-1 460 (500-1)	1640-1½ 460 (500-1½)	NA	