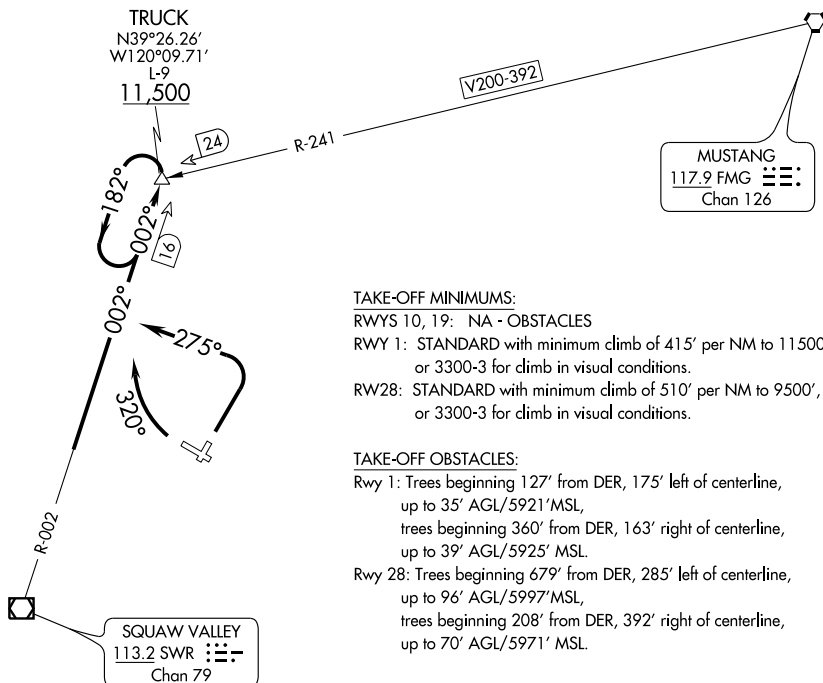


TRUCK THREE DEPARTURE (OBSTACLE)

OAKLAND CENTER
127.95 316.1
UNICOM 122.8 (CTAF)
AWOS-3 118.0



TAKE-OFF MINIMUMS:

RWYS 10, 19: NA - OBSTACLES

RWY 1: STANDARD with minimum climb of 415' per NM to 11500', or 3300-3 for climb in visual conditions.

RWY28: STANDARD with minimum climb of 510' per NM to 9500', or 3300-3 for climb in visual conditions.

TAKE-OFF OBSTACLES:

Rwy 1: Trees beginning 127' from DER, 175' left of centerline, up to 35' AGL/5921' MSL, trees beginning 360' from DER, 163' right of centerline, up to 39' AGL/5925' MSL.

Rwy 28: Trees beginning 679' from DER, 285' left of centerline, up to 96' AGL/5997' MSL, trees beginning 208' from DER, 392' right of centerline, up to 70' AGL/5971' MSL.

NOTE: Chart not to scale.

DEPARTURE ROUTE DESCRIPTION

TAKE-OFF RUNWAY 1: Climbing left turn to 11,500' via heading 275° and SWR R-002 to TRUCK INT, thence..., or, climb in visual conditions to cross Truckee-Tahoe Airport heading 290° at or above 9100', then proceed on SWR R-002 to TRUCK INT, thence...

TAKE-OFF RUNWAY 28: Climbing right turn to 11,500' via heading 320° and SWR R-002 to TRUCK INT, thence..., or, climb in visual conditions to cross Truckee-Tahoe Airport heading 290° at or above 9100', then proceed on SWR R-002 to TRUCK INT, thence...

...Cross TRUCK INT at or above 11,500'. If required, continue climb-in-TRUCK INT holding pattern to cross TRUCK INT at or above 11,500'.