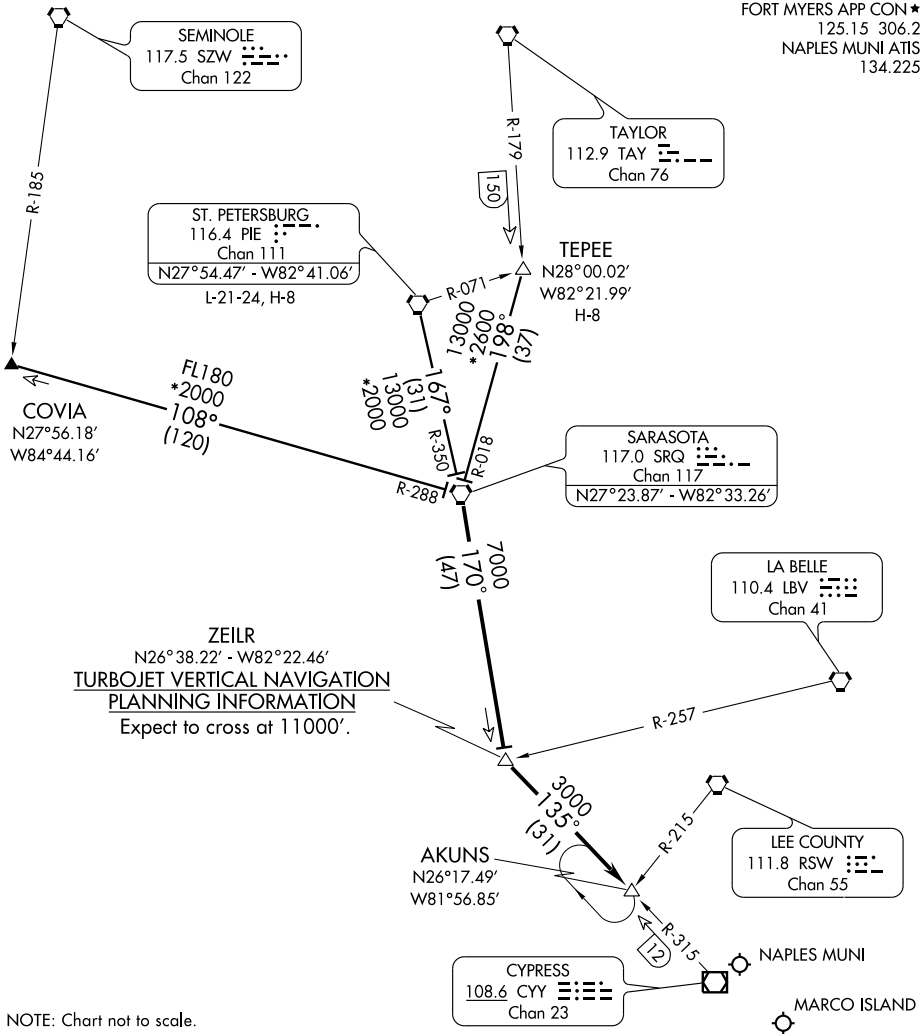


ZEILR TWO ARRIVAL

ST-6020 (FAA)

NAPLES, FLORIDA

FORT MYERS APP CON *
 125.15 306.2
 NAPLES MUNI ATIS
 134.225



SE-3, 22 OCT 2009 to 19 NOV 2009

SE-3, 22 OCT 2009 to 19 NOV 2009

NOTE: Chart not to scale.

COVIA TRANSITION (COVIA.ZEILR2): From over COVIA INT via SRQ R-288 to SRQ VORTAC. Thence. . . .

ST. PETERSBURG TRANSITION (PIE.ZEILR2): From over PIE VORTAC via PIE R-167 to SRQ VORTAC. Thence. . . .

TEPEE TRANSITION (TEPEE.ZEILR2): From over TEPEE INT via SRQ R-018 to SRQ VORTAC. Thence. . . .

. . . . From over SRQ VORTAC via SRQ R-170 to ZEILR INT. Then via CYY R-315 to AKUNS INT. Expect radar vectors to final approach course.

ZEILR TWO ARRIVAL

NAPLES, FLORIDA