

NAPLES, FLORIDA

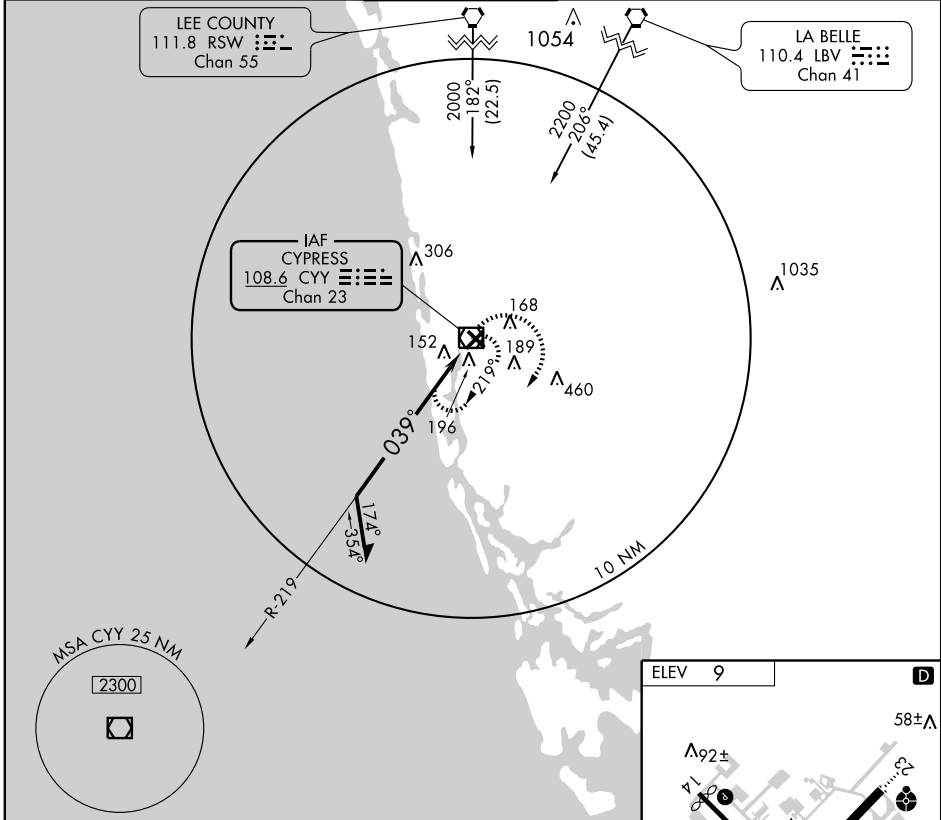
AL-6020 (FAA)

VOR RWY 5  
NAPLES MUNI (APF)

VOR/DME CYY <b>108.6</b> Chan 23	APP CRS <b>039°</b>	Rwy Idg TDZE Apt Elev	<b>5000</b> <b>9</b> <b>9</b>
--	------------------------	-----------------------------	-------------------------------------

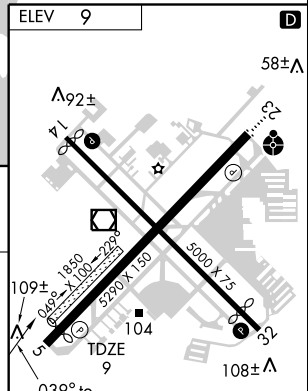
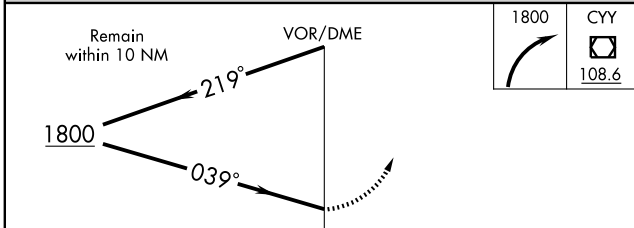
MISSED APPROACH: Climbing right turn to 1800 in CYY VOR/DME holding pattern.

ATIS <b>134.225</b>	FORT MYERS APP CON ★ <b>119.75 327.8</b>	NAPLES TOWER ★ <b>128.5 (CTAF)</b> <b>0</b>	GND CON <b>121.6</b>	NAPLES CLNC DEL <b>118.0</b>
------------------------	---	--	-------------------------	---------------------------------



SE-3, 22 OCT 2009 to 19 NOV 2009

SE-3, 22 OCT 2009 to 19 NOV 2009



CATEGORY	A	B	C	D
S-5	500-1 491 (500-1)		500-1¼ 491 (500-1¼)	500-1½ 491 (500-1½)
CIRCLING	500-1 491 (500-1)		500-1½ 491 (500-1½)	560-2 551 (600-2)

MIRL Rwy 5-23 and 14-32  
REIL Rwy 5, 14 and 32

NAPLES, FLORIDA  
Amdt 5 09127

26° 09' N - 81° 47' W

NAPLES MUNI (APF)  
VOR RWY 5