

NAPLES, FLORIDA

AL-6020 (FAA)

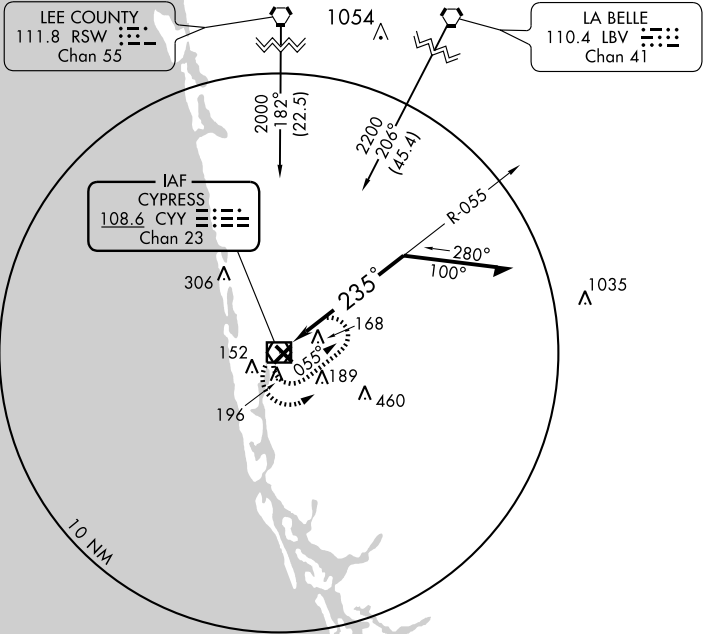
VOR/DME CY 108.6 Chan 23	APP CRS 235°	Rwy Idg TDZE 9 Apt Elev 9	5000
--	------------------------	---	-------------

VOR RWY 23

NAPLES MUNI (APF)

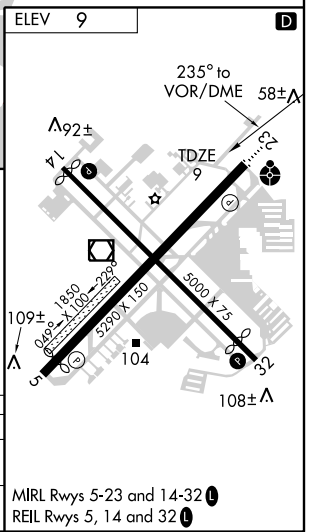
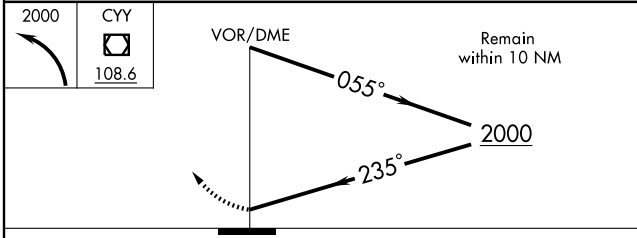
▼ Inoperative table does not apply to Cat. C.	ODALS 	MISSED APPROACH: Climbing left turn to 2000 in CYV VOR/DME holding pattern.
--	-----------	---

ATIS 134.225	FORT MYERS APP CON* 119.75 327.8	NAPLES TOWER* 128.5 (CTAF)	GND CON 121.6	NAPLES CLNC DEL 118.0
------------------------	--	--------------------------------------	-------------------------	---------------------------------



SE-3, 22 OCT 2009 to 19 NOV 2009

SE-3, 22 OCT 2009 to 19 NOV 2009



CATEGORY	A	B	C	D
S-23	500-3/4 491 (500-3/4)		500-1 1/4 491 (500-1 1/4)	500-1 1/2 491 (500-1 1/2)
CIRCLING	500-1 491 (500-1)		500-1 1/2 491 (500-1 1/2)	560-2 551 (600-2)

NAPLES, FLORIDA
Amdt 6C 09127

26° 09' N - 81° 47' W

NAPLES MUNI (APF) VOR RWY 23