

# RNAV (GPS) RWY 23

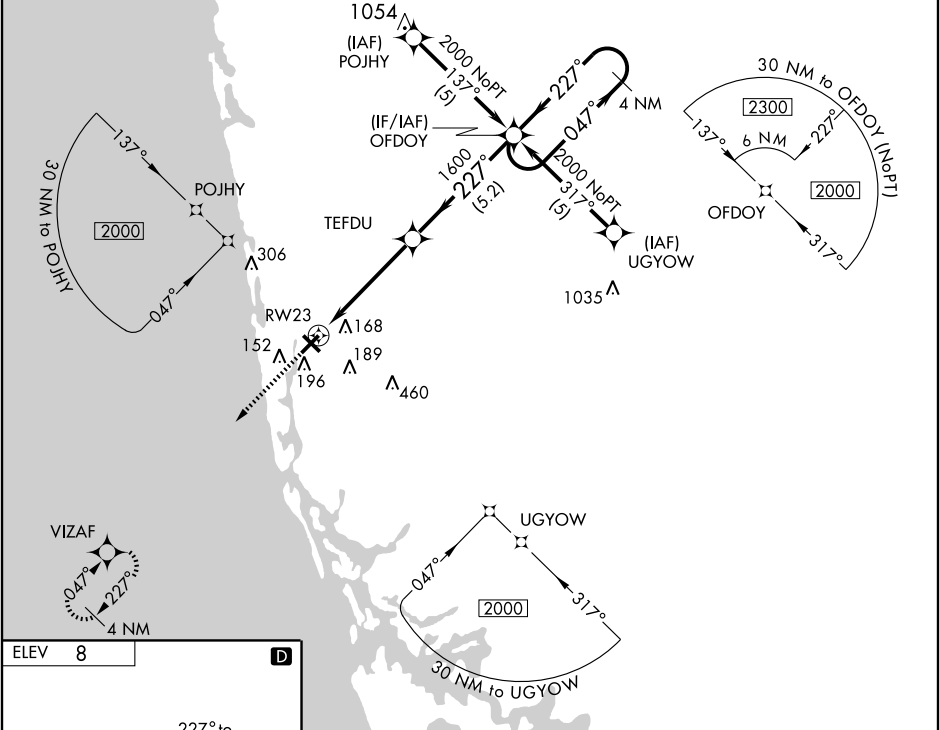
NAPLES MUNI (APF)

APP CRS <b>227°</b>	Rwy Idg TDZE Apt Elev	<b>5000</b> <b>8</b> <b>8</b>
------------------------	-----------------------------	-------------------------------------

**V** Baro-VNAV NA below -1.5°C (5°F).  
**NA** GPS or RNP-0.3 Required. DME/DME RNP-0.3 NA.  
**W** Inoperative table does not apply to LNAV/VNAV.  
 Inoperative table does not apply to LNAV Cat C.

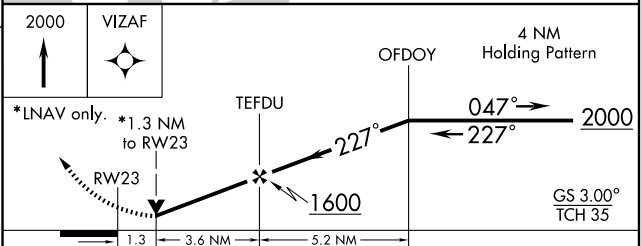
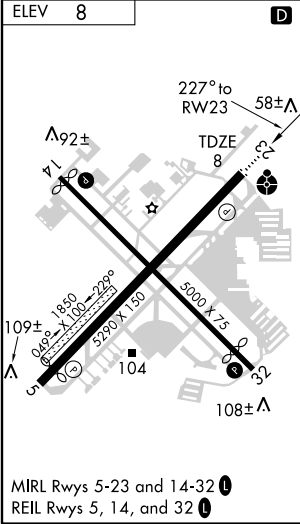
**ODALS** ...  
**MISSED APPROACH:** Climb to 2000 direct VIZAF WP and hold.

ATIS <b>134.225</b>	FORT MYERS APP CON* <b>119.75 327.8</b>	NAPLES TOWER* <b>128.5 (CTAF)</b>	GND CON <b>121.6</b>	NAPLES CLNC DEL <b>118.0</b>
------------------------	--	--------------------------------------	-------------------------	---------------------------------



SE-3, 22 OCT 2009 to 19 NOV 2009

SE-3, 22 OCT 2009 to 19 NOV 2009



CATEGORY	A	B	C	D
GLS DA	NA			
LNAV/VNAV DA	440-1½ 432 (500-1½)			
LNAV MDA	440-¾ 432 (500-¾)	440-¼ 432 (500-¼)	440-½ 432 (500-½)	440-1½ 432 (500-1½)
CIRCLING	500-1½ 492 (500-1½)		560-2 552 (600-2)	