

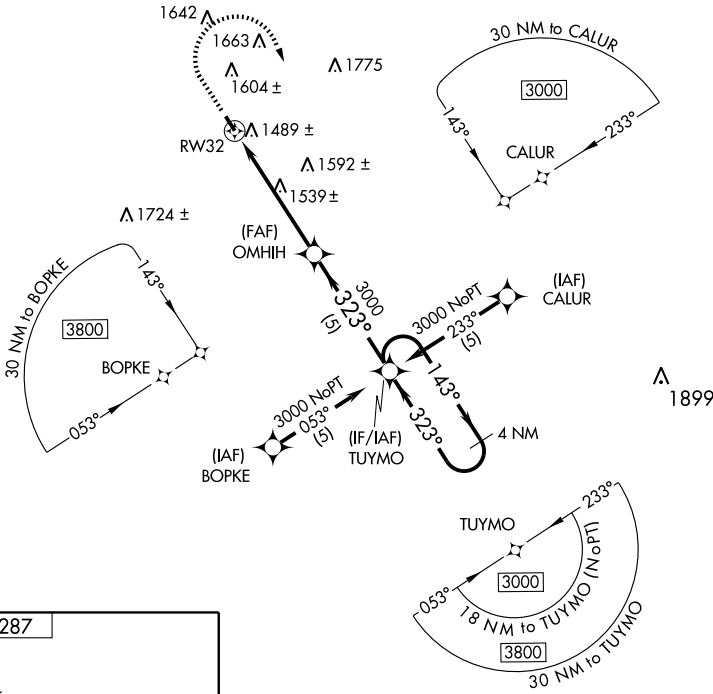
# RNAV (GPS) RWY 32

AUDUBON COUNTY (ADU)

APP CRS <b>323°</b>	Rwy Idg TDZE Apt Elev	<b>3640</b> <b>1287</b> <b>1287</b>
------------------------	-----------------------------	---

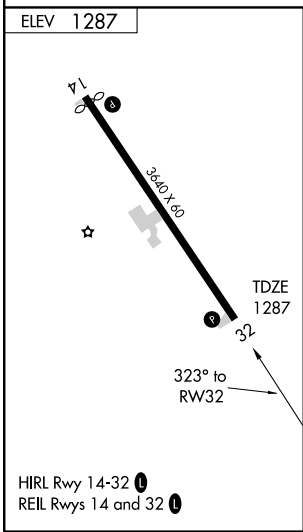
**NA** GPS or RNP -0.3 required. DME/DME RNP -0.3 NA. MISSED APPROACH: Climb to 2500, then climbing right turn to 3000 direct TUYMO WP and hold.

AWOS-3 <b>118.075</b>	MINNEAPOLIS CENTER <b>119.6 290.4</b>	UNICOM <b>122.8 (CTAF)</b>
--------------------------	--	-------------------------------



NC-3, 22 OCT 2009 to 19 NOV 2009

NC-3, 22 OCT 2009 to 19 NOV 2009



	2500	3000	TUYMO	OMHIH	TUYMO	4 NM Holding Pattern
	↑	↷	✧			
	1.5 NM to RW32		1.5 NM	3.8 NM	5 NM	
	RW32		1800	3000	3000	143° →
	323° to RW32		3.00° TCH 40			← 323°
	VGSI and descent angles not coincident.					
CATEGORY	A		B		C	D
LNAV MDA	1740-1		453 (500-1)		NA	
CIRCLING	1900-1		613 (700-1)		NA	