

AUDUBON, IOWA

AL-6019 (FAA)

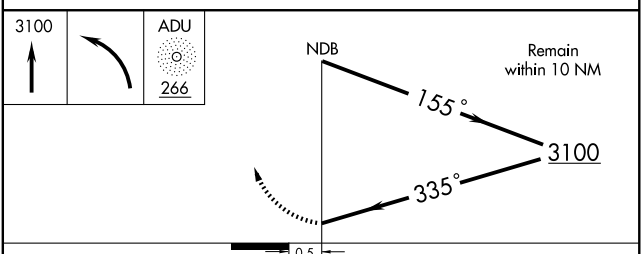
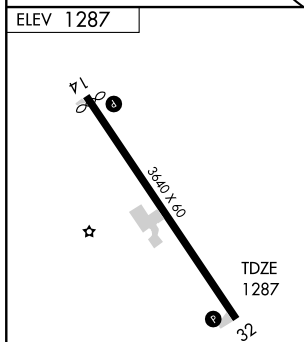
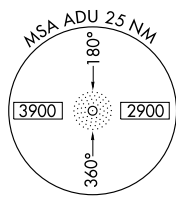
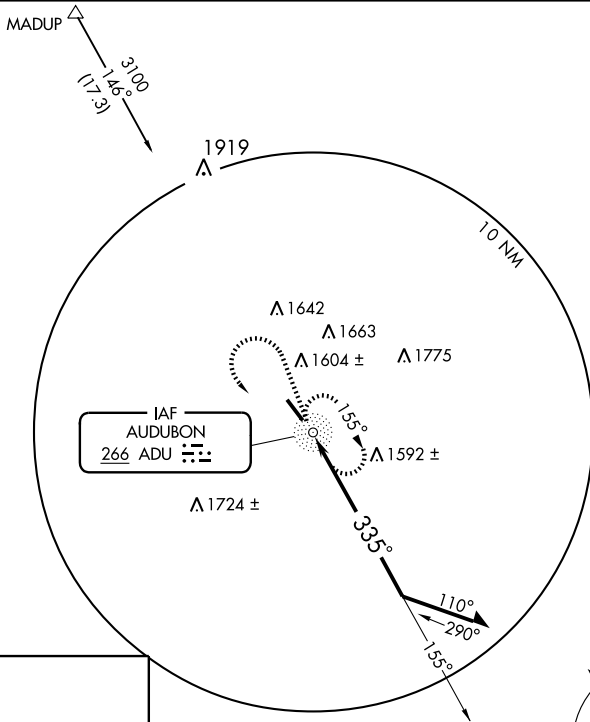
NDB ADU 266	APP CRS 335°	Rwy Idg TDZE Apt Elev	3640 1287 1287
-----------------------	------------------------	-----------------------------	---

NDB RWY 32

AUDUBON COUNTY (ADU)

	MISSED APPROACH: Climb to 3100 then left turn direct ADU NDB and hold.
--	--

AWOS-3 118.075	MINNEAPOLIS CENTER 119.6 290.4	UNICOM 122.8 (CTAF)
--------------------------	--	-------------------------------



HIRL Rwy 14-32	REIL Rwy 14 and 32	CATEGORY	A	B	C	D
		S-32	1980-1	693 (700-1)		NA
		CIRCLING	1980-1	693 (700-1)		NA

AUDUBON, IOWA
Amdt 5A 09071

41° 42'N - 94° 55'W

AUDUBON COUNTY (ADU)
NDB RWY 32

NC-3, 22 OCT 2009 to 19 NOV 2009

NC-3, 22 OCT 2009 to 19 NOV 2009