

# NDB RWY 29

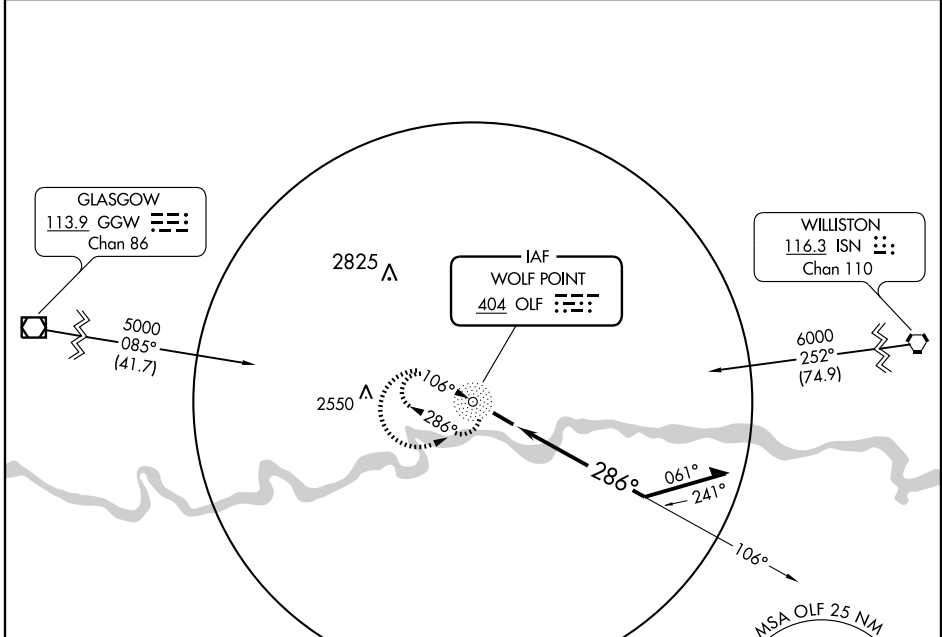
WOLF POINT/L. M. CLAYTON (OLF)

NDB OLF <b>404</b>	APP CRS <b>286°</b>	Rwy Idg TDZE Apt Elev	<b>5089</b> <b>1986</b> <b>1986</b>
-----------------------	------------------------	-----------------------------	---

**▲ NA** If local altimeter setting not received, used Wokal Field/Glasgow Intl altimeter setting and increase all MDAs 160 feet.

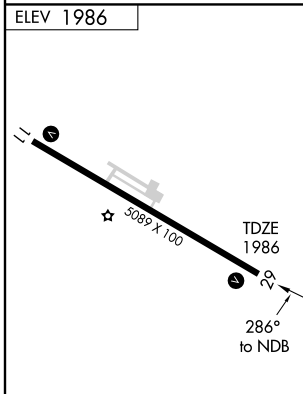
**MISSED APPROACH:** Climbing left turn to 4000 direct OLF NDB continue climb-in-hold to 4000.

ASOS <b>118.325</b>	SALT LAKE CENTER <b>126.85 305.2</b>	UNICOM <b>122.8 (CTAF) 0</b>
------------------------	---	---------------------------------

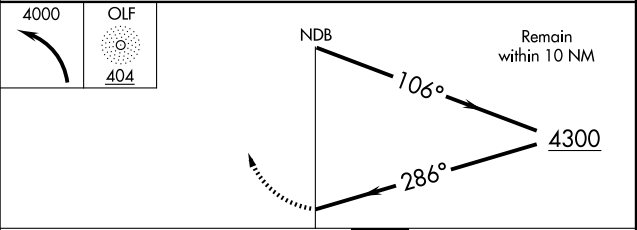


NW-1, 22 OCT 2009 to 19 NOV 2009

NW-1, 22 OCT 2009 to 19 NOV 2009



ELEV 1986					
Knots	60	90	120	150	180
Min:Sec					



CATEGORY	A	B	C	D
S-29	2820-1 834 (900-1)	2820-1¼ 834 (900-1¼)	2820-2½ 834 (900-2½)	2820-2¾ 834 (900-2¾)
CIRCLING	2820-1 834 (900-1)	2820-1¼ 834 (900-1¼)	2820-2½ 834 (900-2½)	2820-2¾ 834 (900-2¾)