

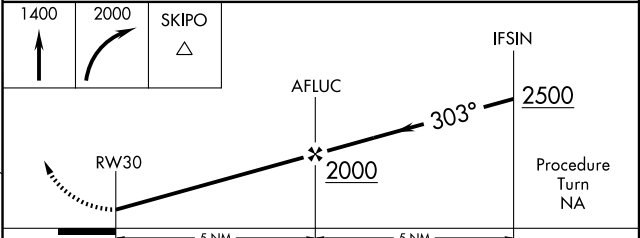
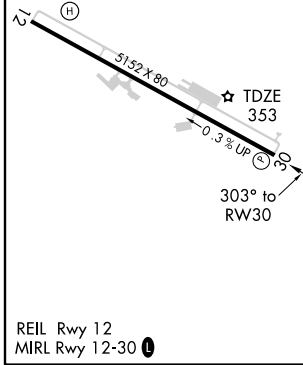
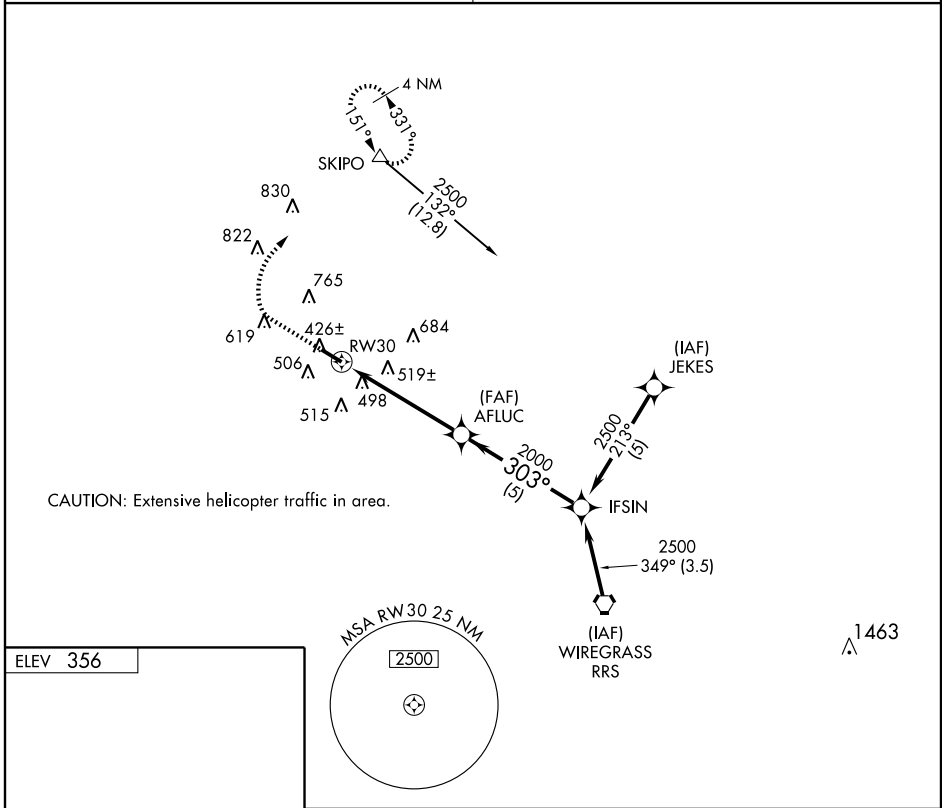
GPS RWY 30

OZARK / BLACKWELL FIELD (71J)

APP CRS	Rwy Idg	5152
303°	TDZE	353
	Apt Elev	356

<p>Use Cairns AAF (Fort Rucker) altimeter setting.</p>	<p>MISSED APPROACH: Climb to 1400 then climbing right turn to 2000 direct SKIPO WP and hold.</p>
--	--

<p>CAIRNS APP CON ★</p> <p>125.4 327.125</p>	<p>UNICOM</p> <p>122.7 (CTAF) 0</p>
---	--



CATEGORY	A	B	C	D
S-30	820-1	467 (500-1)	820-1¼ 467 (500-1¼)	NA
CIRCLING	940-1	584 (600-1)	960-1¾ 604 (700-1¾)	NA

GPS RWY 30

SE-4, 22 OCT 2009 to 19 NOV 2009

SE-4, 22 OCT 2009 to 19 NOV 2009