

GPS RWY 6

BIDDEFORD MUNI (B19)

APP CRS	Rwy Idg	3000
058°	TDZE	157
	Apt Elev	157

▼ Obtain local altimeter on CTAF;
 ▲ NA when not received, use Sanford altimeter setting.

MISSED APPROACH: Climb to 800, then climbing left turn to 2300 direct DEXXY WP and hold.

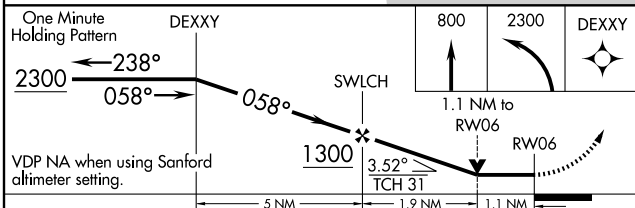
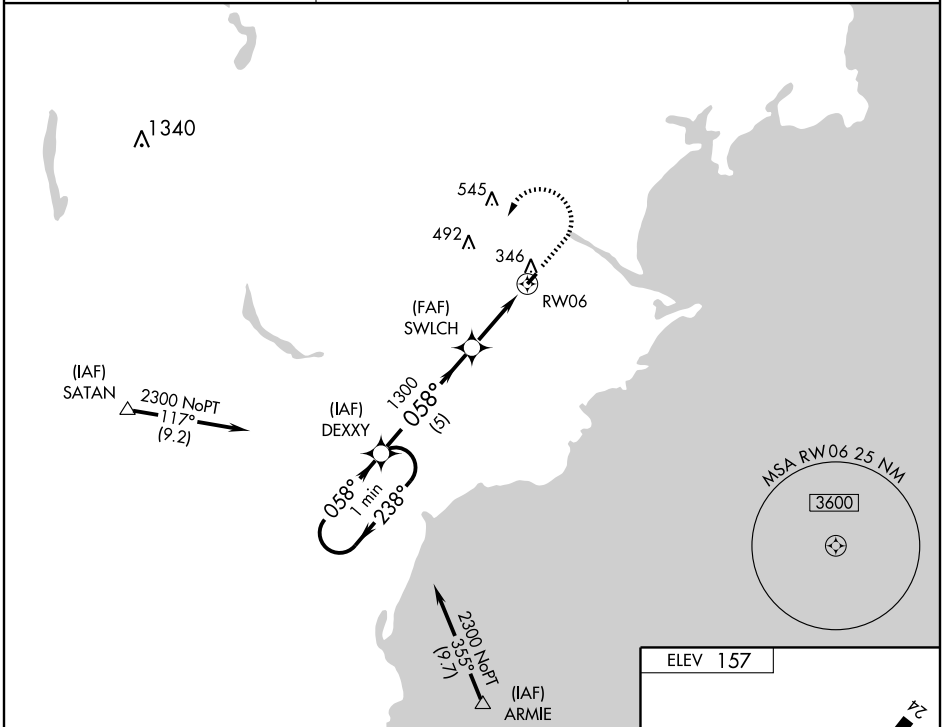
PORTLAND APP CON *
119.75 381.2

CLNC DEL
126.05

UNICOM
123.0 (CTAF) 0

NE-1, 22 OCT 2009 to 19 NOV 2009

NE-1, 22 OCT 2009 to 19 NOV 2009



CATEGORY	A	B	C	D
S-6	580-1	423 (500-1)	580-1¼ 423 (500-1¼)	NA
CIRCLING	700-1	543 (600-1)	700-1½ 543 (600-1½)	NA
SANFORD ALTIMETER SETTING MINIMUMS				
S-6	620-1	463 (500-1)	620-1¼ 463 (500-1¼)	NA
CIRCLING	740-1	583 (600-1)	740-1½ 583 (600-1½)	NA

