

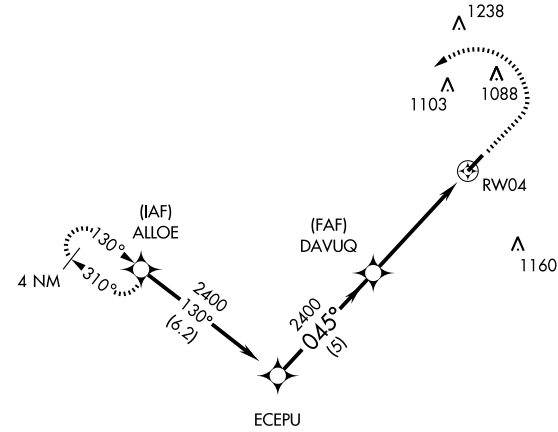
GPS RWY 4

CRAWFORDSVILLE MUNI (CFJ)

APP CRS	Rwy Idg	4500
045°	TDZE	797
	Apt Elev	799

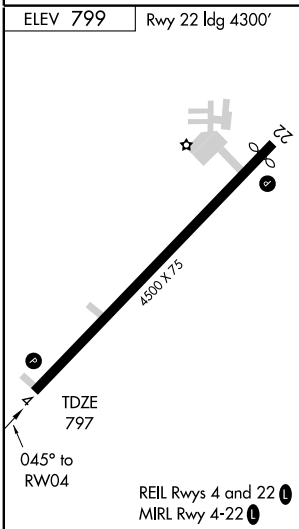
▲ NA Use Indianapolis Intl altimeter setting. MISSED APPROACH: Climb to 2000 then left climbing turn to 2400 direct ALLOE WP and hold.

INDIANAPOLIS APP CON **119.05 317.8** UNICOM **122.8** (CTAF) **📻**



EC-2, 22 OCT 2009 to 19 NOV 2009

EC-2, 22 OCT 2009 to 19 NOV 2009



	ECEPU	DAVUQ	2000	2400	ALLOE
	2400 — 045° —> *				
Procedure Turn NA	2400				
	5 NM		5 NM		
CATEGORY	A	B	C	D	
S-4	1280-1	483 (500-1)	1280-1½ 483 (500-1½)	1280-1½ 483 (500-1½)	
CIRCLING	1320-1	521 (600-1)	1320-1½ 521 (600-1½)	1360-2 561 (600-2)	