

SNYDER, TEXAS

AL-6013 (FAA)

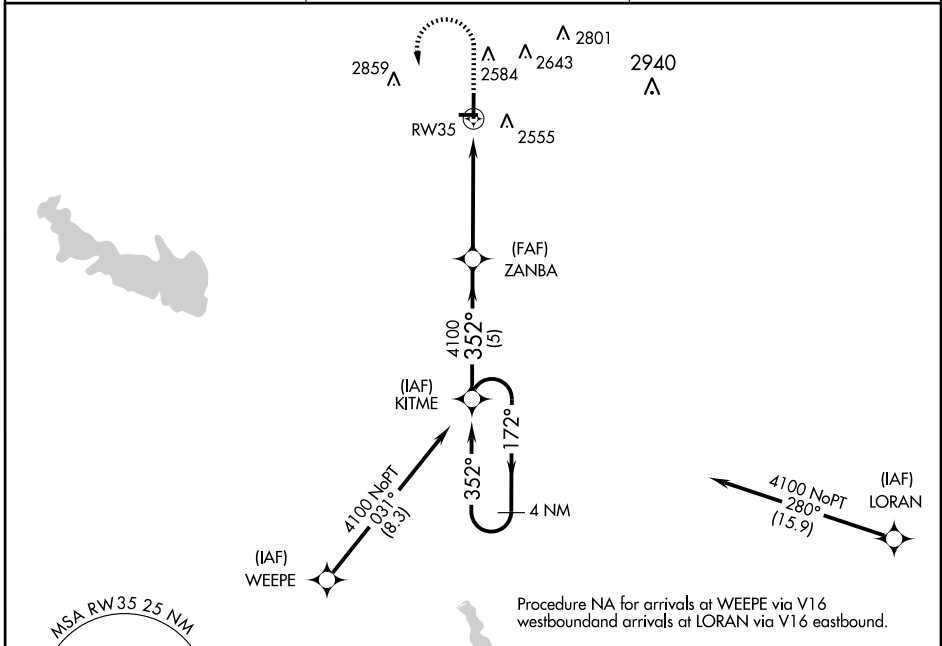
RNAV (GPS) RWY 35

SNYDER/WINSTON FIELD (SNK)

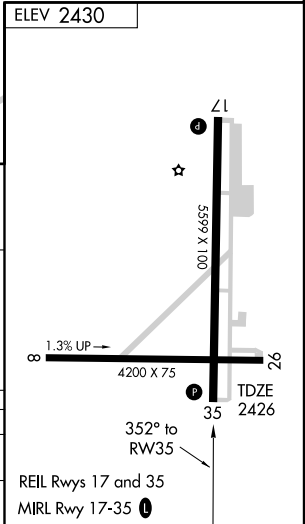
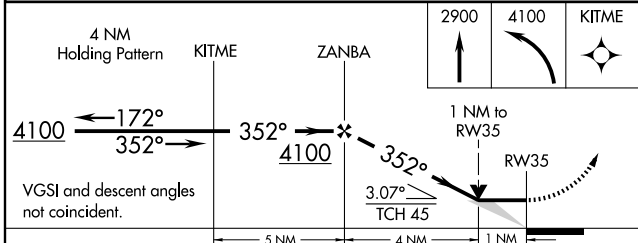
APP CRS 352°	Rwy Idg 5599
	TDZE 2426
	Apt Elev 2430

<p>⚠ Circling NA to Rwy 8-26. GPS or RNP-0.3 Required. DME/DME RNP-0.3 NA.</p>	<p>MISSED APPROACH: Climb to 2900, then climbing left turn to 4100 direct KITME WP and hold.</p>
--	--

<p>AWOS-3 119.925</p>	<p>FORT WORTH CENTER 127.45 290.3</p>	<p>UNICOM 122.8 (CTAF) 0</p>
----------------------------------	--	---



Procedure NA for arrivals at WEEPE via V16 westbound and arrivals at LORAN via V16 eastbound.



CATEGORY	A	B	C	D
LNVA MDA	2780-1 354 (400-1)			NA
CIRCLING	2920-1 490 (500-1)		2920-1½ 490 (500-1½)	NA

SNYDER, TEXAS
Orig 08157

32°42'N-100°57'W

SNYDER/WINSTON FIELD (SNK) RNAV (GPS) RWY 35

SC-2, 22 OCT 2009 to 19 NOV 2009

SC-2, 22 OCT 2009 to 19 NOV 2009