

SNYDER, TEXAS

AL-6013 (FAA)

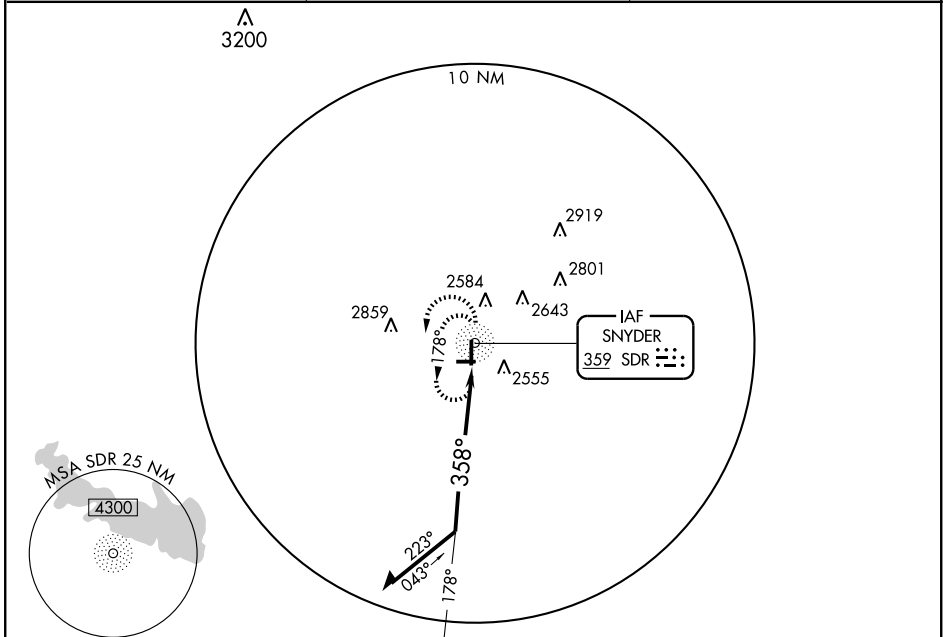
# NDB RWY 35

SNYDER/ WINSTON FIELD (SNK)

NDB SDR <b>359</b>	APP CRS <b>358°</b>	Rwy Idg <b>5599</b>	TDZE <b>2426</b>
		Apt Elev <b>2430</b>	

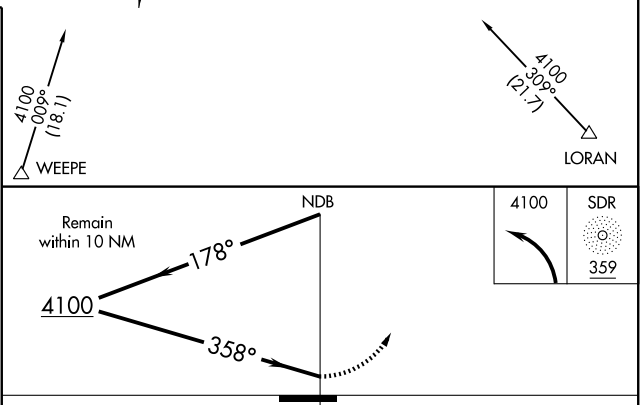
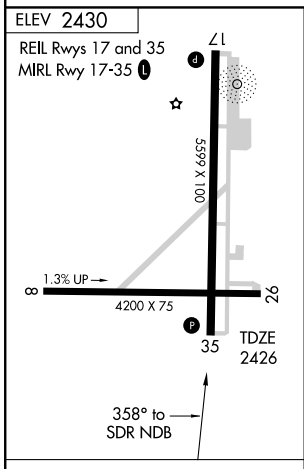
<p><b>∇</b> Circling NA to Rwy 8-26.</p> <p><b>▲</b> NA</p>	<p>MISSED APPROACH: Climbing left turn to 4100 in SDR NDB holding pattern.</p>
---	--

AWOS-3 <b>119.925</b>	FORT WORTH CENTER <b>127.45 290.3</b>	UNICOM <b>122.8 (CTAF) 0</b>
--------------------------	--	---------------------------------



SC-2, 22 OCT 2009 to 19 NOV 2009

SC-2, 22 OCT 2009 to 19 NOV 2009



ELEV 2430	REIL Rwy 17 and 35	MIRL Rwy 17-35
4200 X 75	TDZE 2426	358° to SDR NDB

CATEGORY	A	B	C	D
S-35	2960-1	534 (600-1)	2960-1½ 534 (600-1½)	NA
CIRCLING	2960-1	530 (600-1)	2960-1½ 530 (600-1½)	NA

SNYDER, TEXAS  
Amdt 2 08157

32°42'N-100°57'W

SNYDER/ WINSTON FIELD (SNK)  
**NDB RWY 35**