

MIAMI, OKLAHOMA

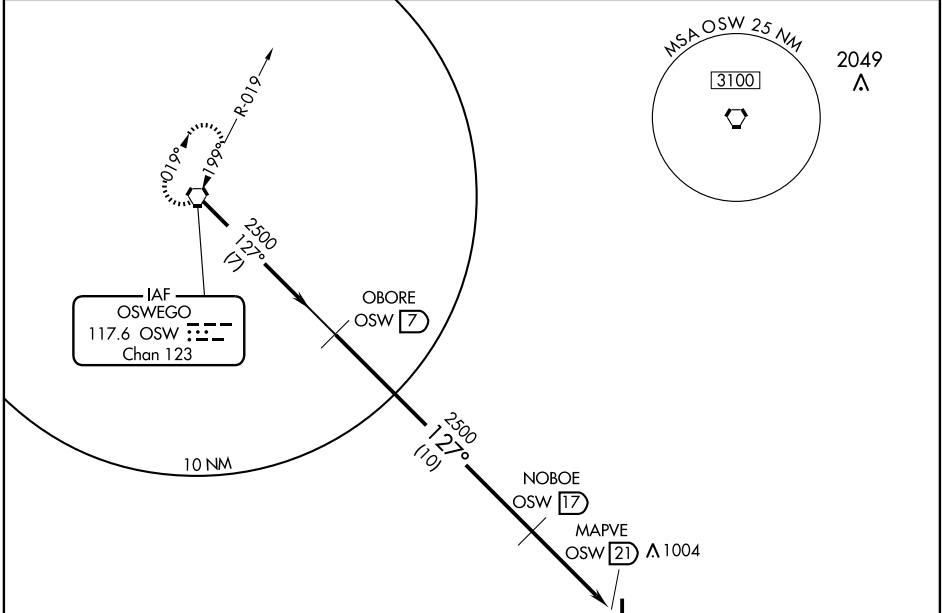
AL-6012 (FAA)

VORTAC OSW 117.6 Chan 123	APP CRS 127°	Rwy Idg TDZE Apt Elev N/A N/A 808
---	------------------------	---

VOR/DME-A
MIAMI MUNI (MIO)

▲ NA Use Joplin Regional altimeter setting. MISSED APPROACH: Climbing right turn to 2500 via OSW R-127 to OSW VORTAC and hold.

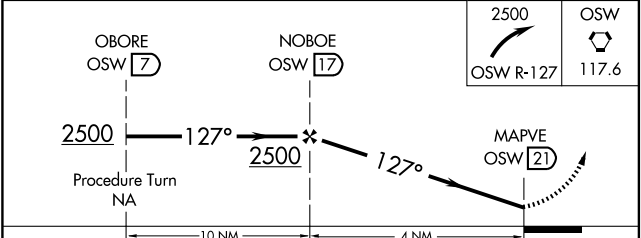
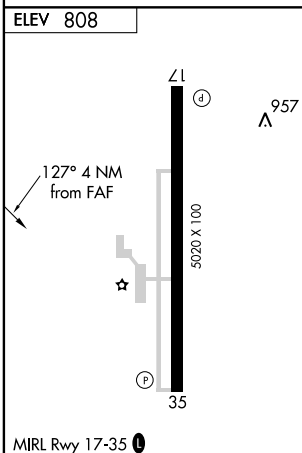
KANSAS CITY CENTER 132.9 279.5	UNICOM 122.8 (CTAF) U
--	--



SC-1, 22 OCT 2009 to 19 NOV 2009

SC-1, 22 OCT 2009 to 19 NOV 2009

Procedure NA for arrival OSW VORTAC airway radials 067 CW 187.



MIRL Rwy 17-35 U	CATEGORY				
	A	B	C	D	
Knots	60	90	120	150	180
Min:Sec					
CIRCLING	1340-1 532 (600-1)	1340-1¼ 532 (600-1¼)	1340-1½ 532 (600-1½)	NA	

MIAMI, OKLAHOMA
Amdt 2 08269

36°55'N-94°53'W

MIAMI MUNI (MIO)
VOR/DME-A