

VOR/DME-A
BUNKIE MUNI (2R6)

VORTAC AEX 116.1 Chan 108	APP CRS 140°	Rwy Idg TDZE Apt Elev N/A N/A 62
---	------------------------	--

▼ Use Alexandria Intl altimeter setting; when not received, use Ester Rgnl altimeter setting.

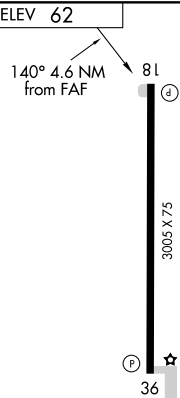
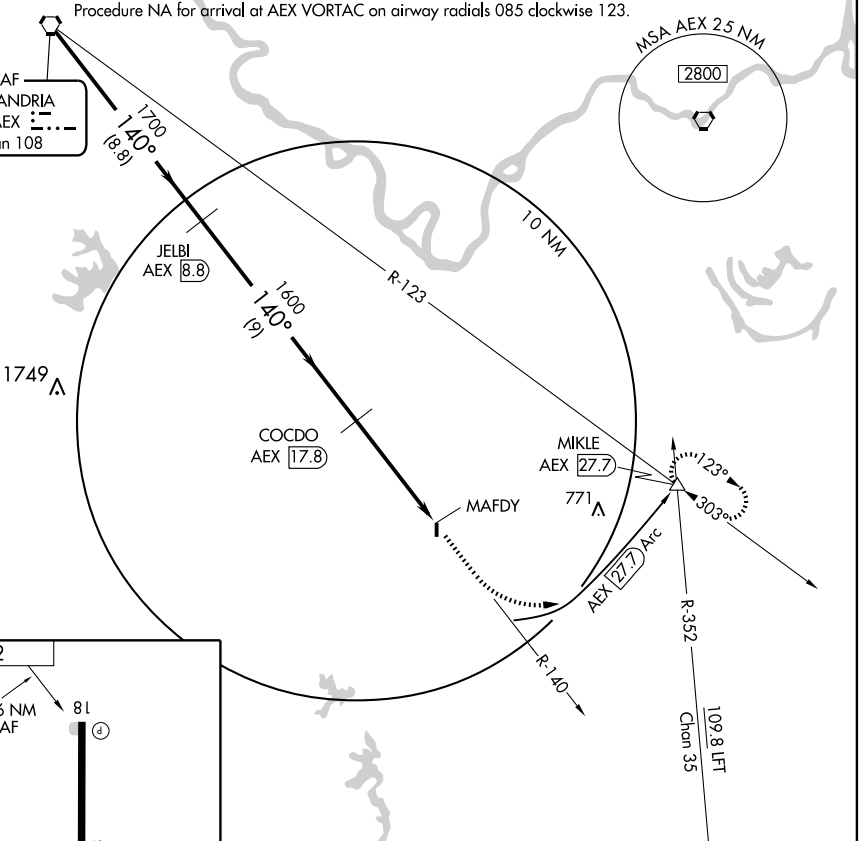
MISSED APPROACH: Climb to 3000 via AEX R-140 and AEX 27.7 DME Arc to MIKLE Int/AEX 27.7 DME and hold.

POLK APP CON
125.4 302.2

CTAF
122.9

Procedure NA for arrival at AEX VORTAC on airway radials 085 clockwise 123.

IAF
ALEXANDRIA
116.1 AEX
Chan 108



	VORTAC	JELBI AEX 8.8	3000 AEX R-140	AEX 27.7 Arc	MIKLE AEX 27.7 △
	2000	1700	1600		
	Procedure Turn NA				
CATEGORY	A	B	C	D	
CIRCLING	880-1 818 (900-1)	880-1¼ 818 (900-1¼)		NA	

REIL Rwy 18 and 36
MIRL Rwy 18-36

SC-4, 22 OCT 2009 to 19 NOV 2009

SC-4, 22 OCT 2009 to 19 NOV 2009