

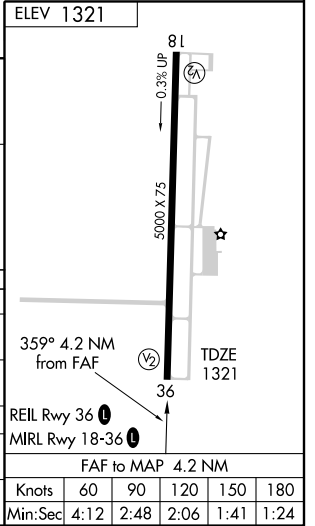
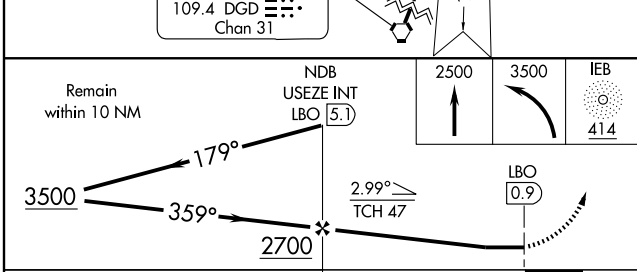
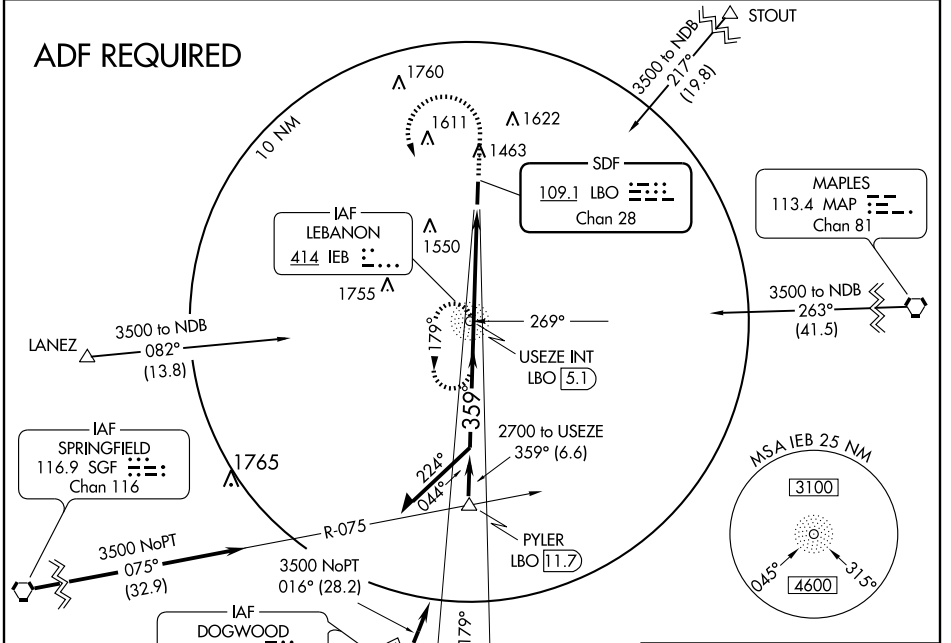
# SDF RWY 36

LEBANON/FLOYD W. JONES LEBANON (LBO)

SDF LBO <b>109.1</b> Chan 28	APP CRS <b>359°</b>	Rwy Idg TDZE Apt Elev	<b>5000</b> <b>1321</b> <b>1321</b>
------------------------------------	------------------------	-----------------------------	---

**NA** When local altimeter setting not received, use Springfield-Branson National altimeter setting. MISSED APPROACH: Climb to 2500 then climbing left turn to 3500 direct IEB NDB and hold.

AWOS-3 <b>118.975</b>	SPRINGFIELD APP CON <b>121.1 290.5</b>	CLNC DEL <b>123.725</b>	UNICOM <b>122.8</b> (CTAF) <b>0</b>
--------------------------	---	----------------------------	--



CATEGORY	A	B	C	D
S-36	1700-1 379 (400-1)			1700-1¼ 379 (400-1¼)
CIRCLING	1820-1 499 (500-1)	1820-1½ 499 (500-1½)		1980-2 659 (700-2)
SPRINGFIELD-BRANSON NATIONAL ALTIMETER SETTING MINIMUMS				
S-36	1800-1 479 (500-1)	1800-1¼ 479 (500-1¼)	1800-1½ 479 (500-1½)	
CIRCLING	1920-1 599 (600-1)	1960-1¾ 639 (700-1¾)	2120-2½ 799 (800-2½)	

NC-3, 22 OCT 2009 to 19 NOV 2009

NC-3, 22 OCT 2009 to 19 NOV 2009