

RNAV (GPS) RWY 18

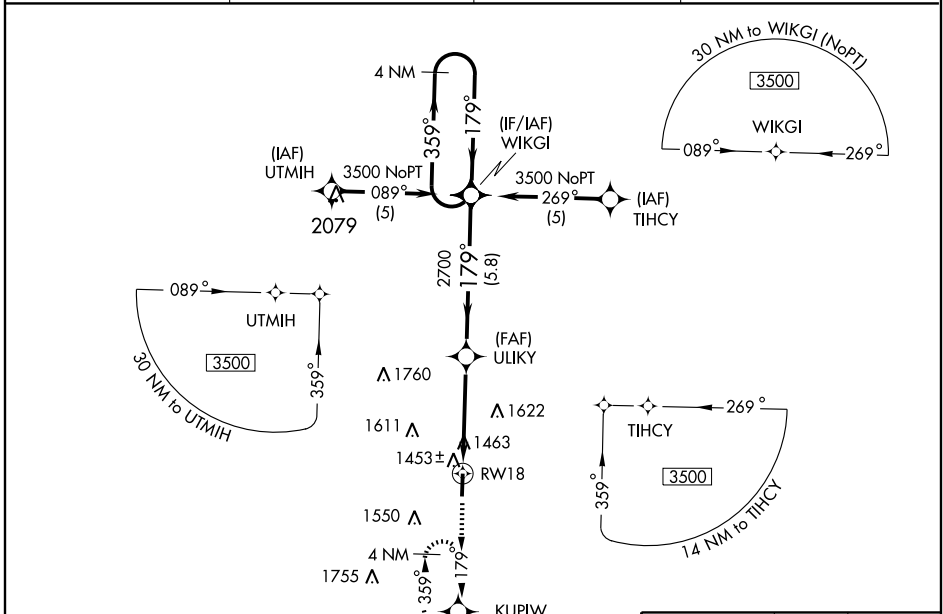
LEBANON/FLOYD W. JONES LEBANON (LBO)

APP CRS 179°	Rwy Idg 5000
	TDZE 1316
	Apt Elev 1321

NA When local altimeter setting not received, use Springfield-Branson National altimeter setting and increase all DA/MDA 120 feet.
Baro-VNAV NA when using Springfield-Branson National altimeter setting.
Baro-VNAV NA below -17° C (1° F). DME/DME RNP-0.3 NA.

MISSED APPROACH: Climb to 3500 direct KUPIW and hold.

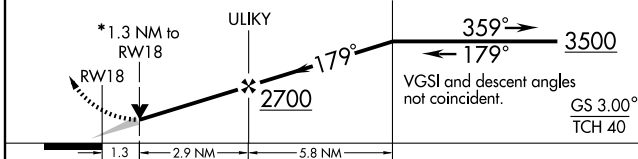
AWOS-3 118.975	SPRINGFIELD APP CON 121.1 290.5	CLNC DEL 123.725	UNICOM 122.8 (CTAF) 0
--------------------------	---	----------------------------	---------------------------------



NC-3, 22 OCT 2009 to 19 NOV 2009

NC-3, 22 OCT 2009 to 19 NOV 2009

3500 ↑ **KUPIW** *INAV only, VDP NA when using Springfield-Branson National altimeter setting. 4 NM Holding Pattern



CATEGORY	A	B	C	D
GLS PA DA	NA			
LNAV/VNAV DA	1937-2 1/4		621 (700-2 1/4)	
LNAV MDA	1760-1	444 (500-1)	1760-1 1/4	444 (500-1 1/4)
CIRCLING	1820-1	499 (500-1)	1820-1 1/2	1980-2 659 (700-2)

