

# VOR/DME RWY 10

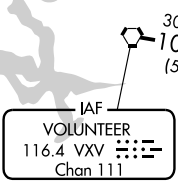
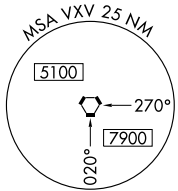
SEVIERVILLE/GATLINBURG-PIGEON FORGE (GKT)

VORTAC VXV <b>116.4</b> Chan <b>111</b>	APP CRS <b>102°</b>	Rwy Idg TDZE Apt Elev	<b>5506</b> <b>1014</b> <b>1014</b>
---	------------------------	-----------------------------	---

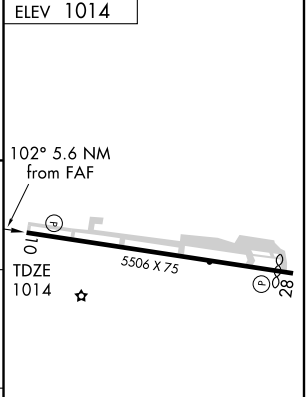
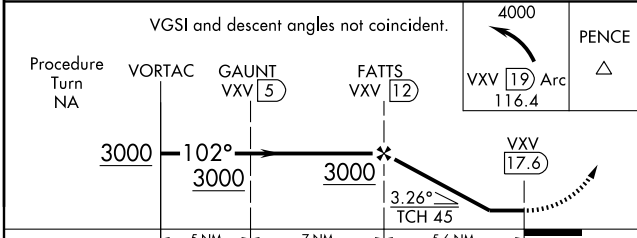
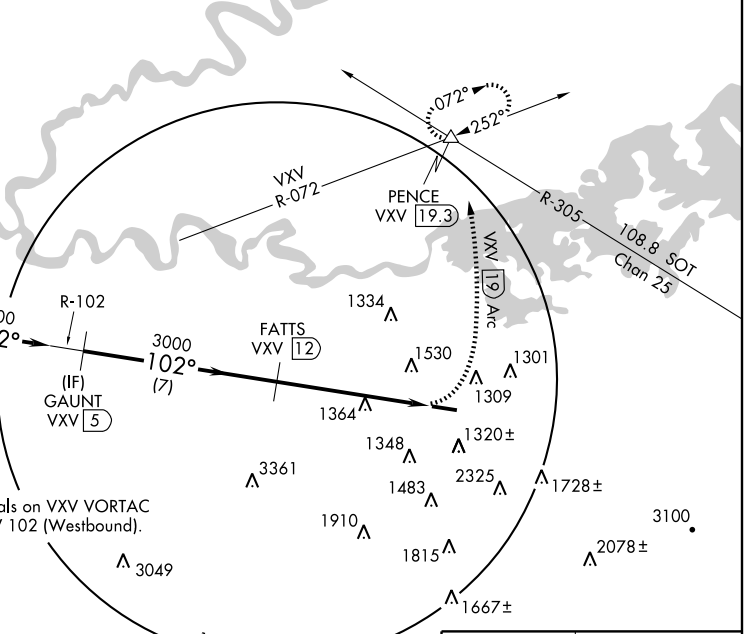
**▼** When local altimeter setting not received, use Knoxville altimeter setting and increase all MDA 60 feet and Cats. A, C and D visibilities ¼ mile.  
**▲ NA** Visibility reduction by helicopters NA.

**MISSED APPROACH:** Climbing left turn to 4000 via VXV 19 DME Arc to PENCE Int and hold.

AWOS-3 <b>126.875</b>	KNOXVILLE APP CON <b>132.8 360.8</b>	UNICOM <b>123.0</b> (CTAF) <b>0</b>
--------------------------	---	--



Procedure NA for arrivals on VXV VORTAC airway radials 053 CW 102 (Westbound).



CATEGORY	A	B	C	D
S-10	1840-1 826 (900-1)	1840-1¼ 826 (900-1¼)	1840-2½ 826 (900-2½)	1840-2¾ 826 (900-2¾)
CIRCLING	1840-1 826 (900-1)	1880-1¼ 866 (900-1¼)	1880-2½ 866 (900-2½)	1880-2¾ 866 (900-2¾)

REIL Rwy 10 and 28  
MRL Rwy 10-28 **0**

SE-1, 22 OCT 2009 to 19 NOV 2009

SE-1, 22 OCT 2009 to 19 NOV 2009