

WAAS CH 99510 W10A	APP CRS 102°	Rwy Idg 5506 TDZE 1014 Apt Elev 1014
--	------------------------	---

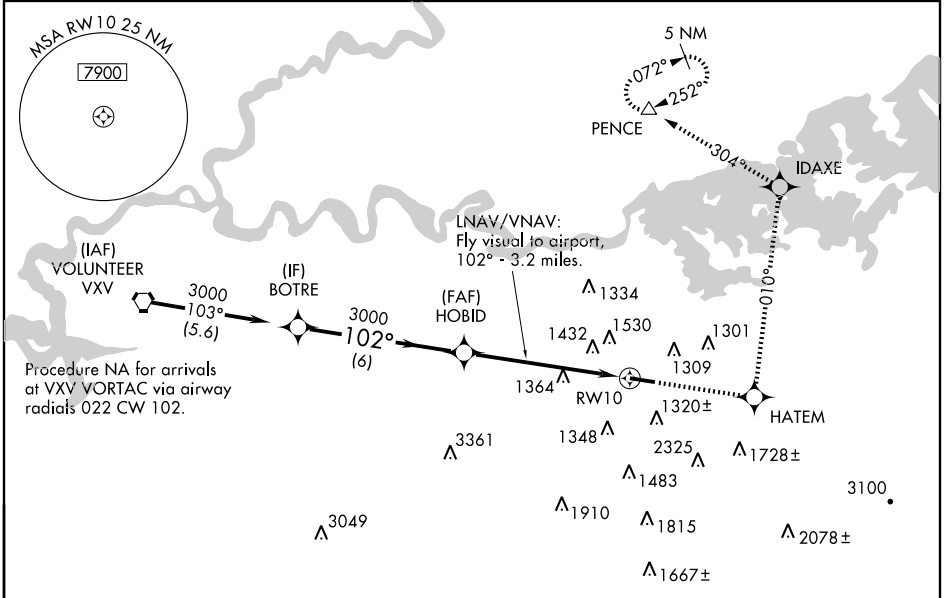
RNAV (GPS) RWY 10

SEVIERVILLE/GATLINBURG-PIGEON FORGE (GKT)

When local altimeter setting not received, use Knoxville altimeter setting and increase all DA/MDA 60 feet, LPV all Cats. visibility ¼ mile, LNAV and Circling Cats. C and D visibility ¼ mile. Baro-VNAV NA when using Knoxville altimeter setting.
 For uncompensated Baro-VNAV systems, LNAV/VNAV NA below -17° C (2° F) or above 47° C (116° F). DME/DME RNP-0.3 NA. Visibility reduction by helicopters NA.

MISSED APPROACH: Climb to 4000 direct HATEM and via 010° track to IDAXE and via 304° track to PENCE and hold.

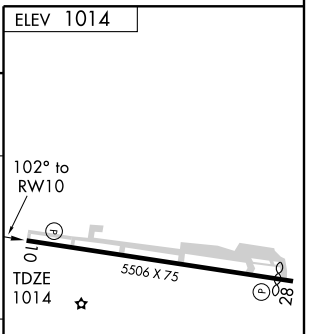
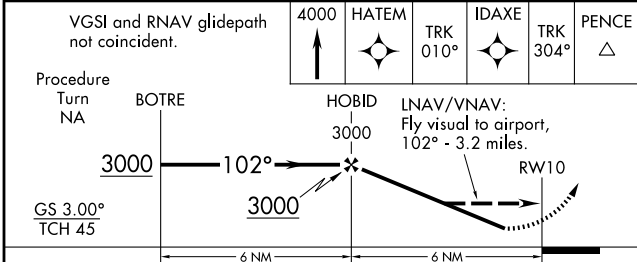
AWOS-3 126.875	KNOXVILLE APP CON 132.8 360.8	UNICOM 123.0 (CTAF) 0
--------------------------	---	---------------------------------



SE-1, 22 OCT 2009 to 19 NOV 2009

SE-1, 22 OCT 2009 to 19 NOV 2009

ELEV 1014



CATEGORY	A	B	C	D
LPV DA	1371-1¼		357 (400-1¼)	
LNAV/DA VNAV	2013-2	999 (1000-2)	2013-3	999 (1000-3)
LNAV MDA	1800-1 786 (800-1)	1800-1¼ 786 (800-1¼)	1800-2¼ 786 (800-2¼)	1800-2½ 786 (800-2½)
CIRCLING	1800-1 786 (800-1)	1880-1¼ 866 (900-1¼)	1880-2½ 866 (900-2½)	1880-2¾ 866 (900-2¾)

REIL Rws 10 and 28
MRL Rwy 10-28 0