

# VOR RWY 14

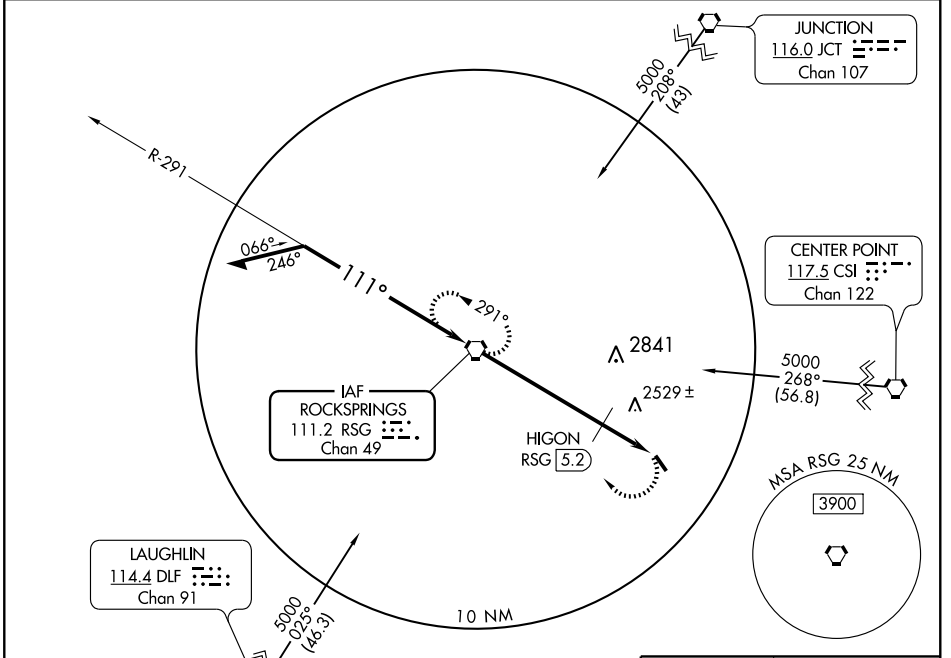
ROCKSPRINGS/EDWARDS COUNTY (ECU)

VORTAC RSG <b>111.2</b> Chan <b>49</b>	APP CRS <b>111°</b>	Rwy Idg TDZE <b>2372</b> Apt Elev <b>2372</b>
--	------------------------	---

**⚠** If local altimeter setting not received, use Kimble County altimeter setting and increase all MDAs 180 feet. VDP NA when using Kimble County altimeter setting. Visibility reduction by helicopters NA.

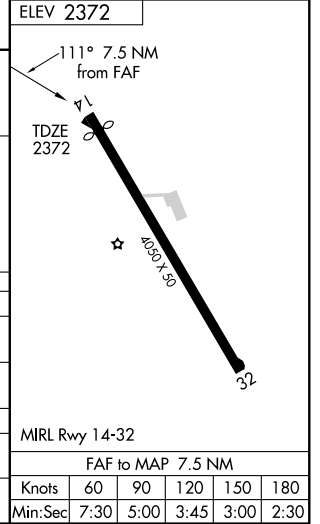
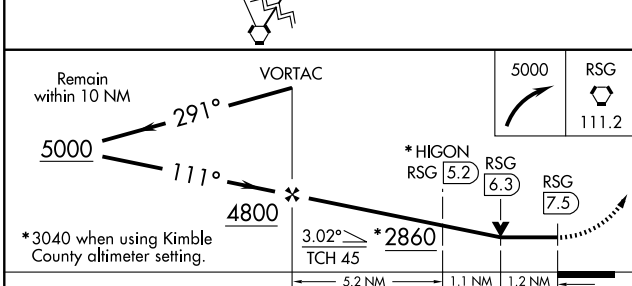
**⚠** MISSED APPROACH: Climbing right turn to 5000 direct RSG VORTAC and hold, continue climb-in-hold to 5000.

AWOS-3 <b>118.175</b>	DEL RIO APP CON * <b>119.6 259.1</b>	CTAF <b>122.9</b>
--------------------------	---	----------------------



SC-3, 22 OCT 2009 to 19 NOV 2009

SC-3, 22 OCT 2009 to 19 NOV 2009



CATEGORY	A	B	C	D
S-14	2860-1	488 (500-1)	2860-1¼ 488 (500-1¼)	NA
CIRCLING	2860-1	488 (500-1)	2860-1½ 488 (500-1½)	NA
HIGON FIX MINIMUMS				
S-14	2780-1	408 (500-1)	2780-1¼ 408 (500-1¼)	NA
CIRCLING	2800-1 428 (500-1)	2840-1 468 (500-1)	2840-1½ 468 (500-1½)	NA