

OELWEIN, IOWA

AL-6004 (FAA)

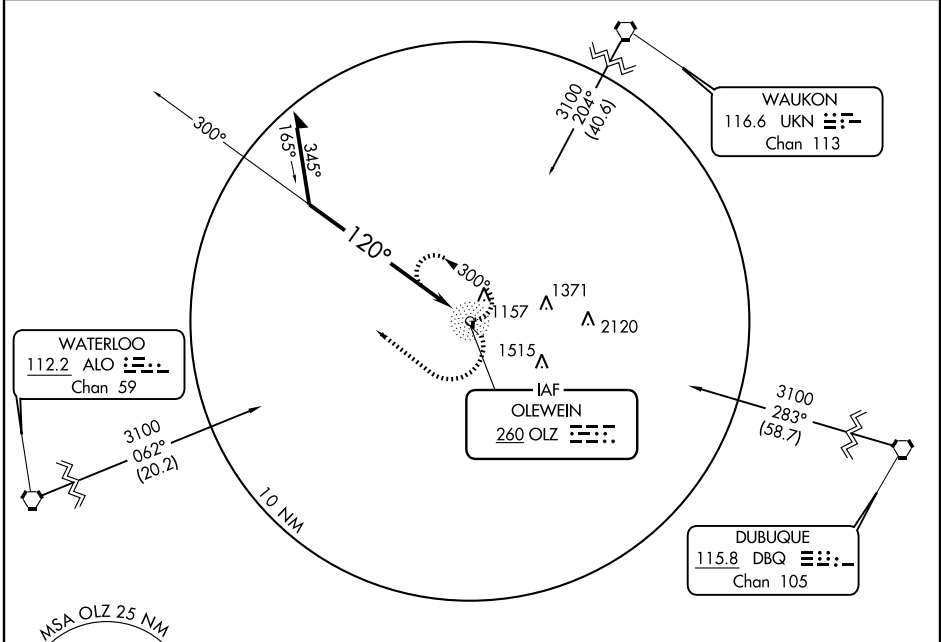
# NDB RWY 13

OELWEIN MUNI (OLZ)

NDB	OLZ	APP CRS	Rwy Idg	4001
	<b>260</b>	<b>120°</b>	TDZE	1076
			Apt Elev	1076

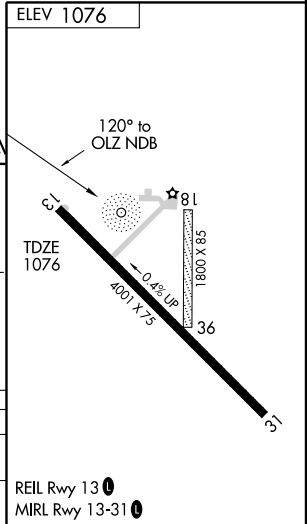
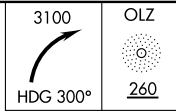
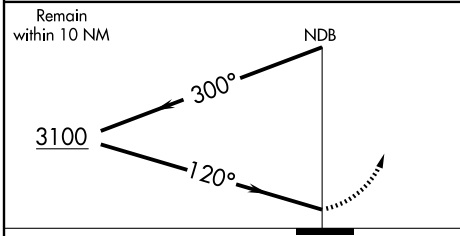
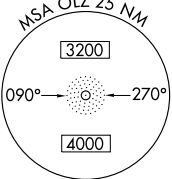
**NA** MISSED APPROACH: Climbing right turn to 3100 via heading 300° then direct OLZ NDB and hold.

AWOS-3 <b>119.675</b>	WATERLOO APP CON* <b>118.9 257.8</b>	UNICOM <b>122.8 (CTAF) 0</b>
--------------------------	---	---------------------------------



NC-3, 22 OCT 2009 to 19 NOV 2009

NC-3, 22 OCT 2009 to 19 NOV 2009



CATEGORY	A	B	C	D
S-13	1740-1	664 (700-1)	1740-1¾ 664 (700-1¾)	1740-2 664 (700-2)
CIRCLING	1740-1	664 (700-1)	1740-1¾ 664 (700-1¾)	1740-2 664 (700-2)

OELWEIN, IOWA  
Amdt 2A 09071

42°41'N-91°58'W

# OELWEIN MUNI (OLZ) NDB RWY 13