

MONROE, WISCONSIN

AL-6003 (FAA)

VOR/DME JVL 114.3 Chan 90	APP CRS 276°	Rwy Idg TDZE Apt Elev	5000 1070 1086
-----------------------------------------------	------------------------	-----------------------------	-------------------------------------------

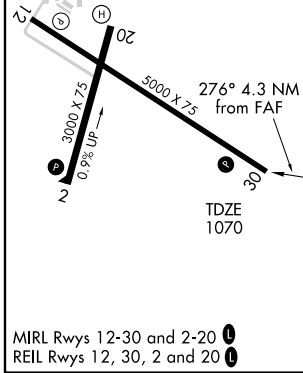
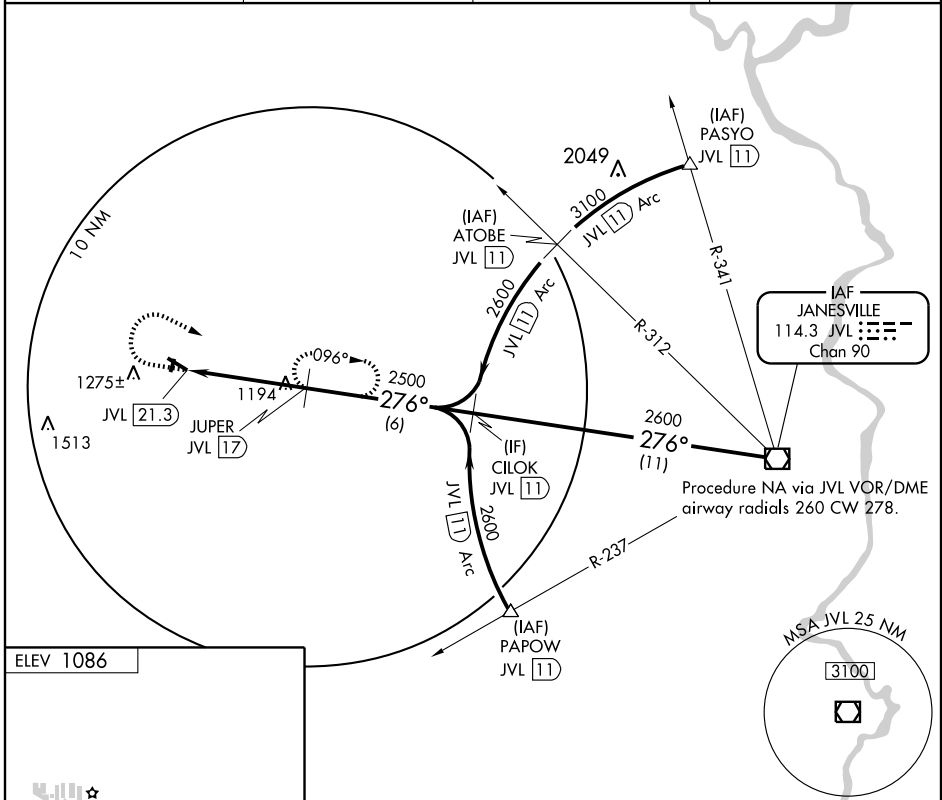
VOR/DME RWY 30

MONROE MUNI (EFT)

⚠ When local altimeter setting not received, use Albers altimeter setting and increase all MDA 100 feet, increase Circling Cat. C visibility 1/4 mile.

⚠ MISSED APPROACH: Climb to 1800 then climbing right turn to 2600 via JVL VOR/DME R-276 to JUPER/JVL 17 DME and hold.

AWOS-3 118.375	ROCKFORD APP CON 126.0 327.0	GCO 121.725	UNICOM 123.05 (CTAF) 0
--------------------------	----------------------------------------	-----------------------	----------------------------------



1800	2600	JUPER JVL 17	VOR/DME	
JVL R-276 114.3	CILOK JVL 11	JUPER JVL 17	2700	
JVL 21.3	2500	2600	276°	
4.3 NM	6 NM	11 NM	Procedure Turn NA	
CATEGORY	A	B	C	D
S-30	1460-1 390 (400-1)	1460-1 1/4 390 (400-1 1/4)	1460-1 1/2 390 (400-1 1/2)	1460-1 3/4 390 (400-1 3/4)
CIRCLING	1540-1 454 (500-1)	1640-1 1/4 554 (600-1 1/4)	1640-1 1/2 554 (600-1 1/2)	1640-2 554 (600-2)

MONROE, WISCONSIN
Amdt 8 09127

42°37'N-89°35'W

VOR/DME RWY 30

MONROE MUNI (EFT)

EC-3, 22 OCT 2009 to 19 NOV 2009

EC-3, 22 OCT 2009 to 19 NOV 2009