

MONROE, WISCONSIN

AL-6003 (FAA)

# RNAV (GPS) RWY 30

MONROE MUNI (E.F.T)

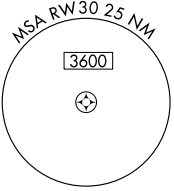
APP CRS	Rwy Idg	<b>5000</b>
<b>301°</b>	TDZE	<b>1070</b>
	Apt Elev	<b>1086</b>



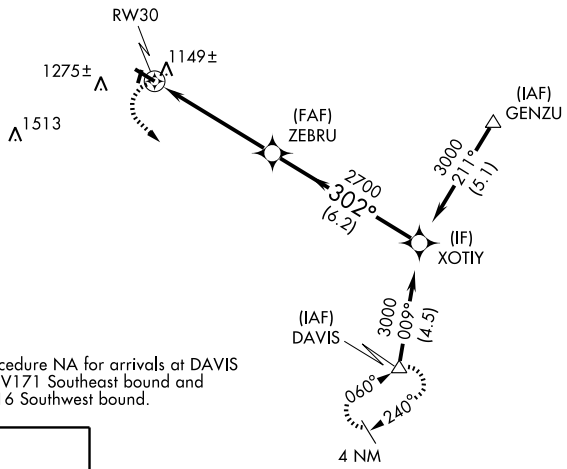
DME/DME RNP-0.3 NA. When local altimeter setting not received, use Albetrus altimeter setting and increase all MDA 100 feet, increase LNAV Cat. C/D and Circling Cat. C visibility ¼ mile. VDP NA when using Albetrus altimeter setting.

MISSED APPROACH: Climbing left turn to 3000 direct DAVIS and hold.

AWOS-3 <b>118.375</b>	ROCKFORD APP CON <b>126.0 327.0</b>	GCO <b>121.725</b>	UNICOM <b>123.05 (CTAF)</b>
--------------------------	--	-----------------------	--------------------------------



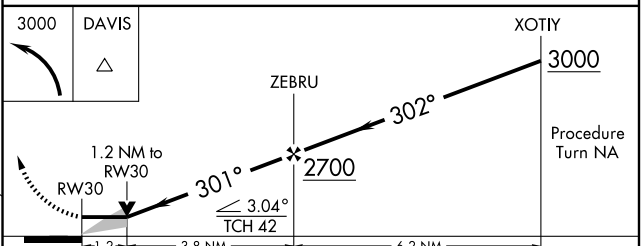
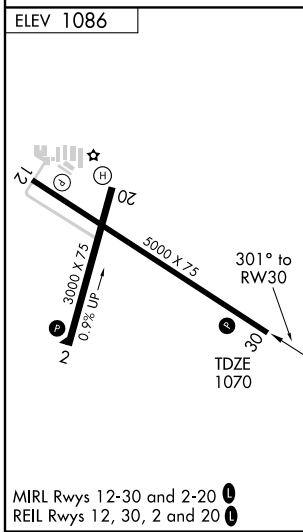
2049



Procedure NA for arrivals at DAVIS via V171 Southeast bound and V216 Southwest bound.

EC-3, 22 OCT 2009 to 19 NOV 2009

EC-3, 22 OCT 2009 to 19 NOV 2009



CATEGORY	A	B	C	D
LNAV MDA	1480-1	410 (400-1)	1480-1¼	410 (400-1¼)
CIRCLING	1540-1 454 (500-1)	1640-1 554 (600-1)	1640-1½ 554 (600-1½)	1640-2 554 (600-2)

MONROE, WISCONSIN  
Orig 09127

42° 37' N-89° 35' W

MONROE MUNI (E.F.T)  
**RNAV (GPS) RWY 30**