

RNAV (GPS) RWY 12

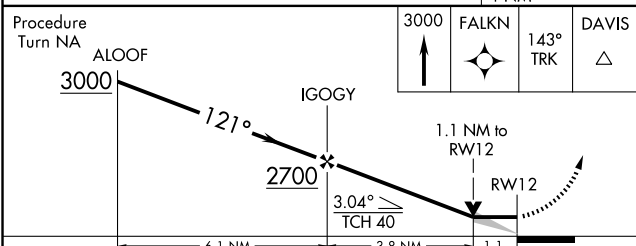
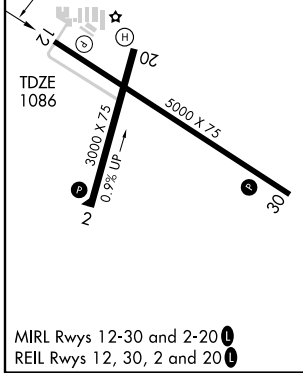
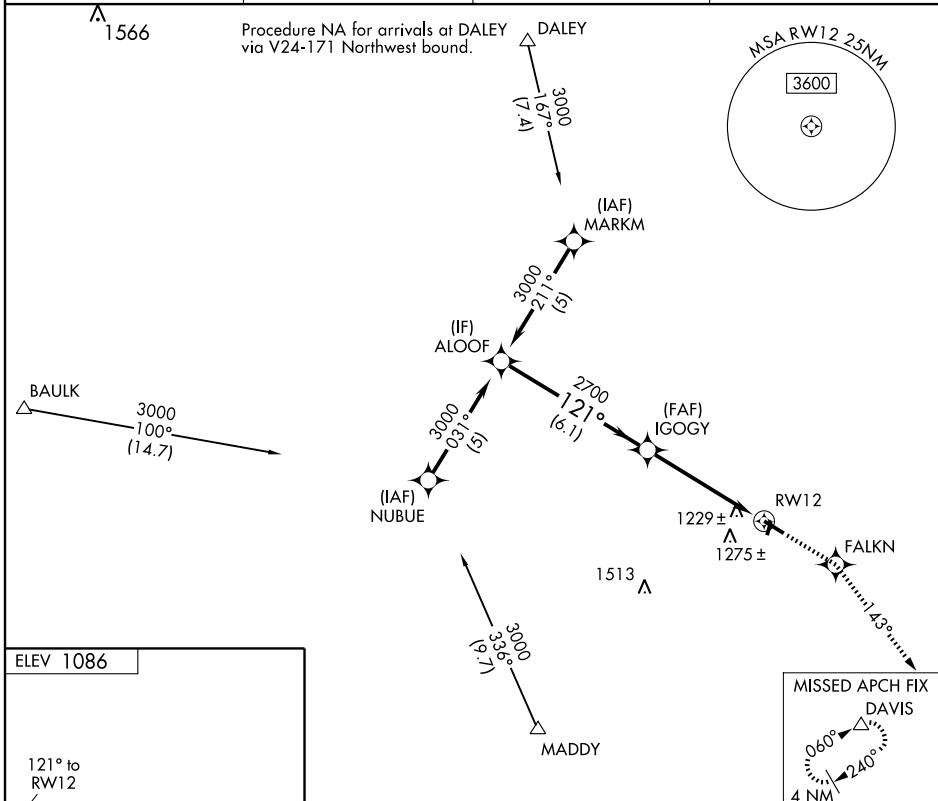
MONROE MUNI (EFT)

| | | |
|-------------|----------|-------------|
| APP CRS | Rwy Idg | 5000 |
| 121° | TDZE | 1086 |
| | Apt Elev | 1086 |

⚠ DME/DME RNP-0.3 NA. VDP NA when using Albertus altimeter setting. When local altimeter setting not received, use Albertus altimeter setting and increase all MDA 100 feet, increase LNAV Cat. C/D and Circling Cat. C visibility ¼ mile.

MISSED APPROACH: Climb to 3000 direct FALKN and via 143° track to DAVIS and hold.

| | | | |
|---------------------------------|---|------------------------------|---|
| AWOS-3 118.375 | ROCKFORD APP CON 126.0 327.0 | GCO 121.725 | UNICOM 123.05 (CTAF) 0 |
|---------------------------------|---|------------------------------|---|



| CATEGORY | A | B | C | D |
|----------|-----------------------|-----------------------|-------------------------|-------------------------|
| LNAV MDA | 1480-1 | | | 1480-1½ 394 (400-1½) |
| CIRCLING | 1540-1 454 (500-1) | 1640-1 554 (600-1) | 1640-1½ 554 (600-1½) | 1640-2 554 (600-2) |

EC-3, 22 OCT 2009 to 19 NOV 2009

EC-3, 22 OCT 2009 to 19 NOV 2009