

| | | | |
|---|------------------------|-----------------------------|---|
| LOC/DME I-VMU 108.7 Chan 24 | APP CRS 269° | Rwy Idg TDZE Apt Elev | 6001 1058 1079 |
|---|------------------------|-----------------------------|---|

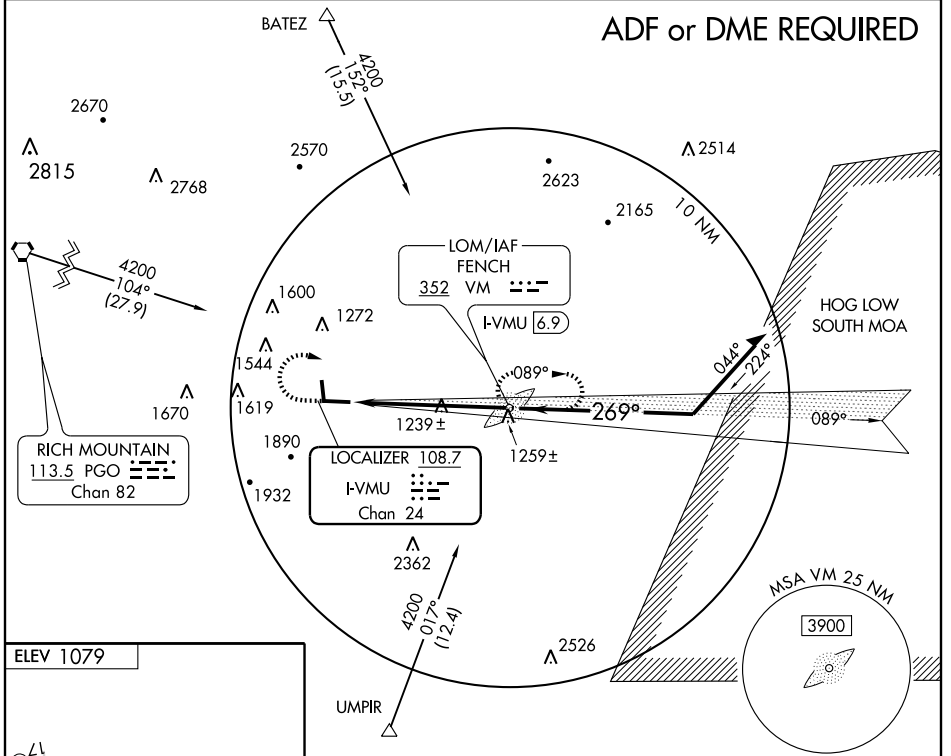
ILS or LOC RWY 27

MENA INTERMOUNTAIN MUNI (MEZ)

ADF Required. When local altimeter setting not received, use Fort Smith Rgnl altimeter setting and increase all DA 197 feet, all MDA 200 feet, increase S-ILS 27 visibilities ½ mile, S-LOC 27 Cat B visibility ¼ mile Cat C visibility ½ mile and circling Cat A/B ¼ mile. VDP NA when using Fort Smith Rgnl altimeter setting.

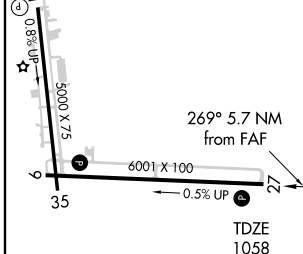
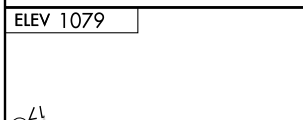
MISSED APPROACH: Climb to 1700 then climbing right turn to 3600 direct FENCH LOM/I-VMU 6.9 DME and hold.

| | | |
|--------------------------|--------------------------------------|-------------------------------|
| AWOS-3 118.025 | MEMPHIS CENTER 126.1 269.0 | UNICOM 122.8 (CTAF) |
|--------------------------|--------------------------------------|-------------------------------|



SC-1, 22 OCT 2009 to 19 NOV 2009

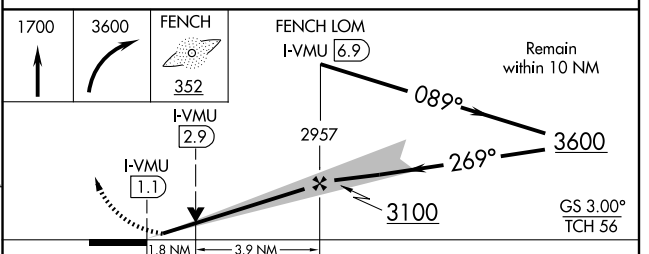
SC-1, 22 OCT 2009 to 19 NOV 2009



REIL Rwy 35
MIRL Rwy 17-35
HIRL Rwy 9-27

FAF to MAP 5.7 NM

| | | | | | |
|---------|------|------|------|------|------|
| Knots | 60 | 90 | 120 | 150 | 180 |
| Min:Sec | 5:42 | 3:48 | 2:51 | 2:17 | 1:54 |



| CATEGORY | A | B | C | D |
|----------|----------------------|----------------------|----------------------|----|
| S-ILS 27 | 1458-1½ 400 (400-1½) | | | NA |
| S-LOC 27 | 1660-1 | 602 (600-1) | 1660-1¾ 602 (600-1¼) | NA |
| CIRCLING | 1880-1 801 (900-1) | 1940-1¼ 861 (900-1¼) | 2060-3 981 (1000-3) | NA |