

CLEBURNE, TEXAS

AL-6000 (FAA)

RNAV (GPS) RWY 33

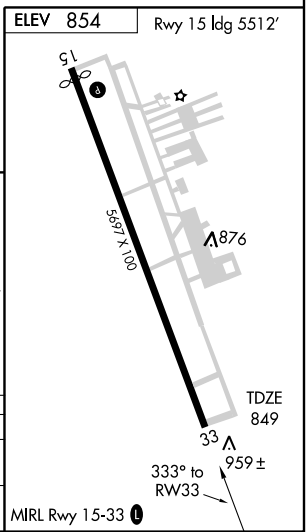
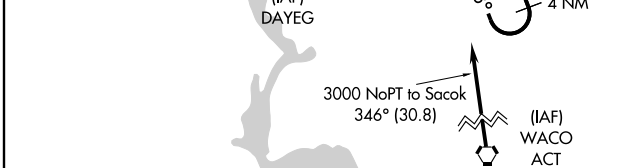
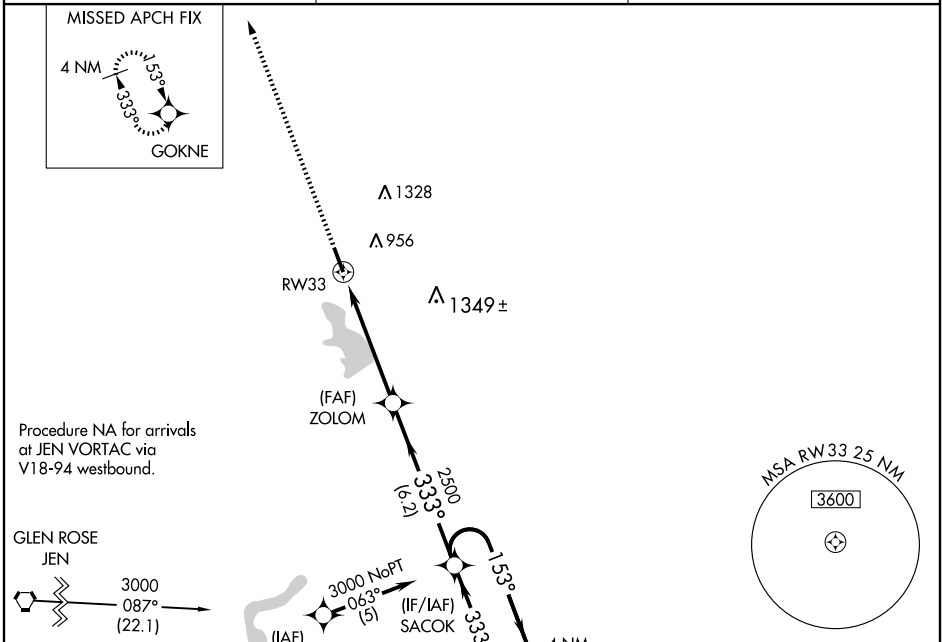
CLEBURNE MUNI (CPT)

APP CRS 333°	Rwy Idg 5697
	TDZE 849
	Apt Elev 854

⚠ DME/DME RNP-0.3 NA. Visibility reduction by helicopters NA. When local altimeter setting not received, use Fort Worth Meacham altimeter setting and increase all MDAs 100 feet, and increase LNAV visibility Cats C and D ¼ mile.

MISSED APPROACH: Climb to 3000 direct GOKNE and hold.

AWOS-3 119.525	REGIONAL APP CON 135.975 379.9	UNICOM 122.8 (CTAF) 0
--------------------------	--	---------------------------------



CATEGORY	A	B	C	D
LNAV MDA	1220-1	371 (400-1)		1220-1¼ 371 (400-1¼)
CIRCLING	1300-1 446 (500-1)	1320-1 466 (500-1)	1320-1½ 466 (500-1½)	1420-2 566 (600-2)

CLEBURNE, TEXAS
Orig 08269

32°21'N-97°26'W

RNAV (GPS) RWY 33

SC-2, 22 OCT 2009 to 19 NOV 2009

SC-2, 22 OCT 2009 to 19 NOV 2009