

HOLDREGE, NEBRASKA

AL-5999 (FAA)

VOR/DME-A

HOLDREGE/BREWSTER FIELD (HDE)

VOR EAR 111.2	APP CRS 212°	Rwy Idg TDZE Apt Elev	N/A N/A 2313
-------------------------	------------------------	-----------------------------	---

⚠ If local altimeter setting not received, use Kearney altimeter setting and increase all MDAs 80 feet. Simultaneous reception of I-**EAR** DME and EAR VOR required.

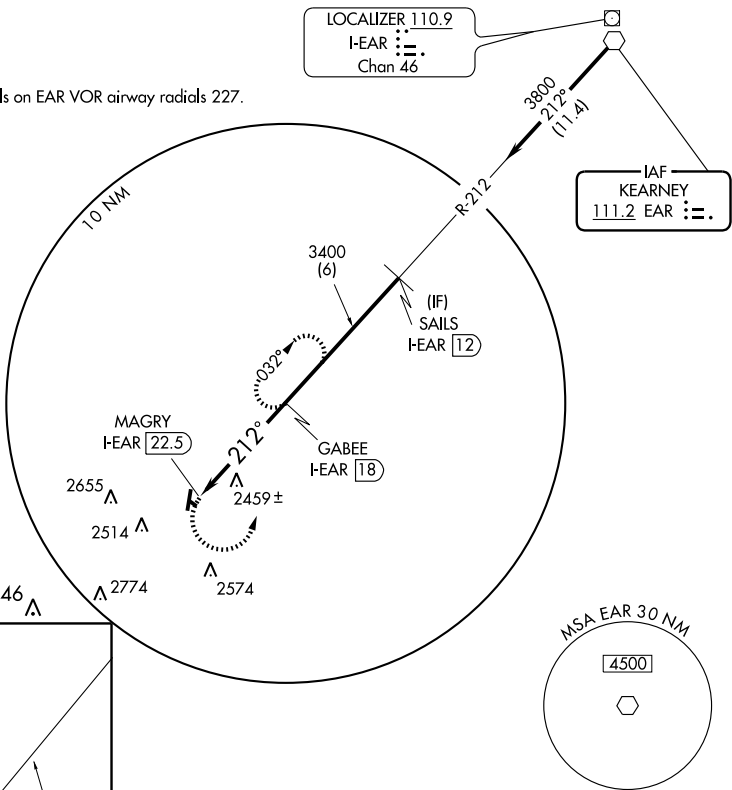
MISSED APPROACH: Climbing left turn to 3900 via EAR VOR R-212 to GABEE I-**EAR** 18 DME and hold.

AWOS-3
121.325

DENVER CENTER
132.7 397.85

UNICOM
122.8 (CTAF) 0

Procedure NA for arrivals on EAR VOR airway radials 227.

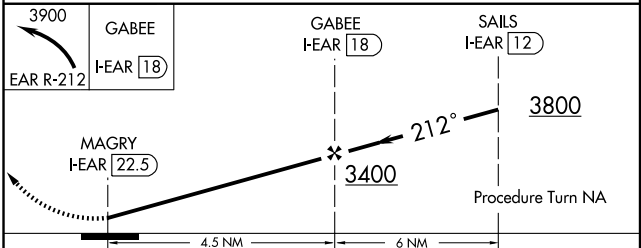
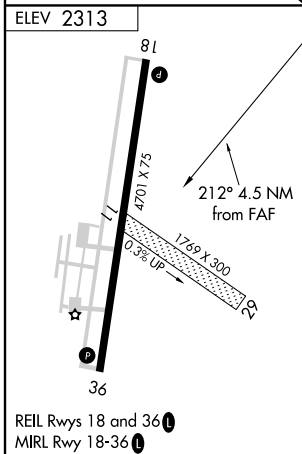


LOCALIZER 110.9
I-**EAR** : - .
Chan 46

IAF
KEARNEY
111.2 EAR : - .

NC-2, 22 OCT 2009 to 19 NOV 2009

NC-2, 22 OCT 2009 to 19 NOV 2009



CATEGORY	A	B	C	D
CIRCLING	3100-1 787 (800-1)	3100-1¼ 787 (800-1¼)	3100-2¼ 787 (800-2¼)	3100-2½ 787 (800-2½)

HOLDREGE, NEBRASKA
Amdt 3 08101

40°27'N-99°20'W

HOLDREGE/BREWSTER FIELD (HDE)
VOR/DME-A