

HOLDREGE, NEBRASKA

AL-5999 (FAA)

RNAV (GPS) RWY 36

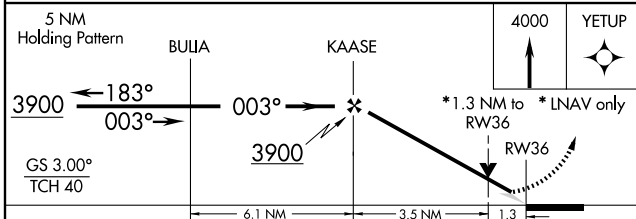
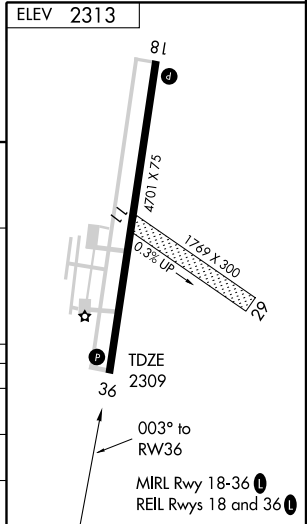
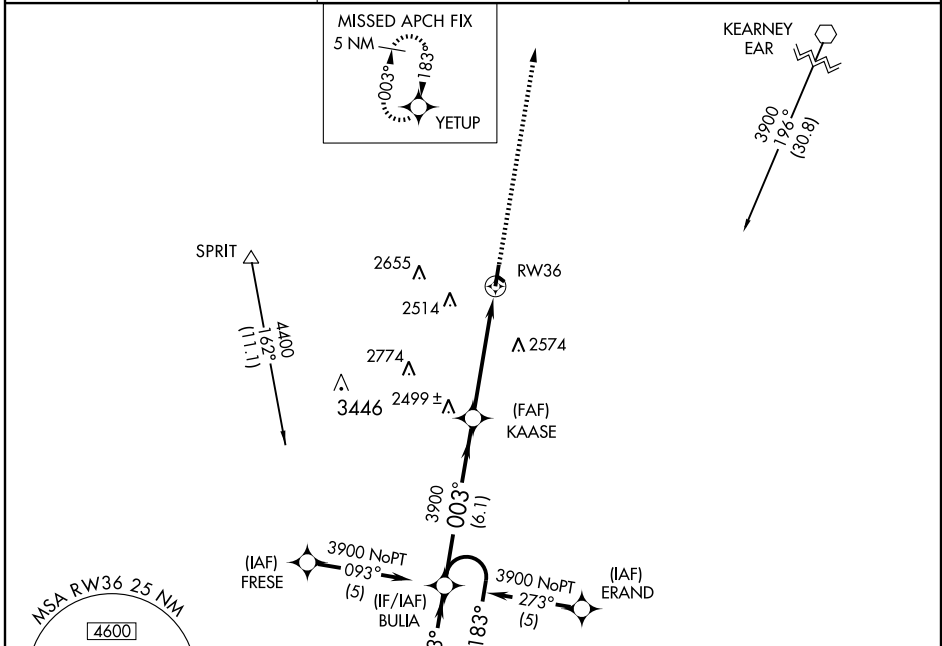
HOLDREGE/BREWSTER FIELD (HDE)

WAAS CH 69301 W36A	APP CRS 003°	Rwy Idg 4701 TDZE 2309 Apt Elev 2313
--	------------------------	---

⚠ DME/DME RNP-0.3 NA. If local altimeter setting not received, use Kearney altimeter setting and increase all DAs/MDAs 80 feet. VDP NA when using Kearney altimeter setting.

MISSED APPROACH: Climb to 4000 direct YETUP and hold.

AWOS-3 121.325	DENVER CENTER 132.7 397.85	UNICOM 122.8 (CTAF) 0
---------------------------------	---	--



CATEGORY	A	B	C	D
LPV DA	2559-1 250 (300-1)			
LNAV MDA	2760-1	451 (500-1)	2760-1½ 451 (500-1½)	2760-1½ 451 (500-1½)
CIRCLING	2840-1	527 (600-1)	2840-1½ 527 (600-1½)	2880-2 567 (600-2)

HOLDREGE, NEBRASKA
Orig 08101

40°27'N-99°20'W

HOLDREGE/BREWSTER FIELD (HDE)

RNAV (GPS) RWY 36

NC-2, 22 OCT 2009 to 19 NOV 2009

NC-2, 22 OCT 2009 to 19 NOV 2009