

HOLDREGE, NEBRASKA

AL-5999 (FAA)

# RNAV (GPS) RWY 18

HOLDREGE/BREWSTER FIELD (HDE)

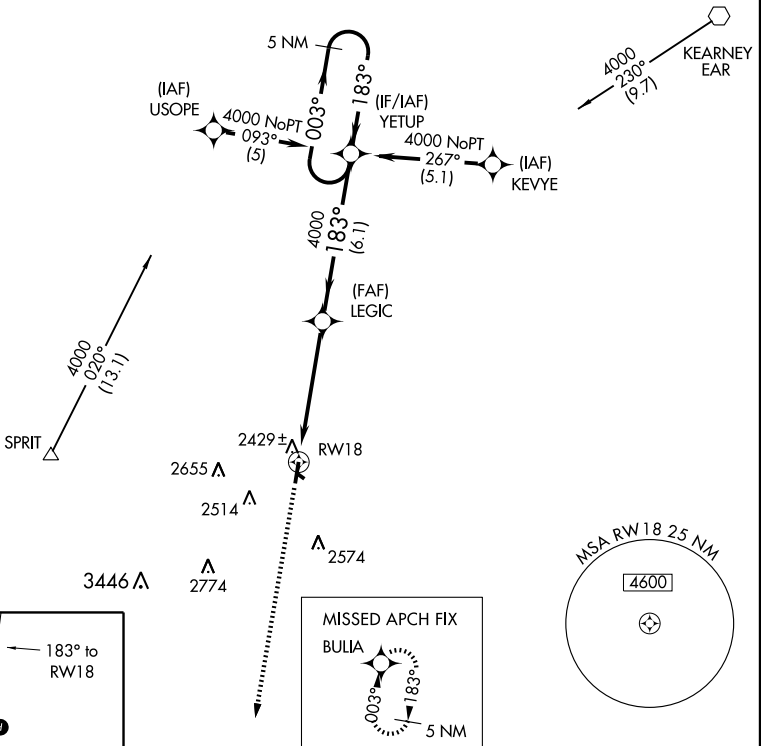
WAAS CH <b>73002</b> <b>W18A</b>	APP CRS <b>183°</b>	Rwy Idg TDZE Apt Elev	<b>4701</b> <b>2309</b> <b>2313</b>
--	------------------------	-----------------------------	---

**▼** If local altimeter setting not received, use Kearney altimeter setting and increase all DAs/MDAs 80 feet. DME/DME RNP-0.3 NA.  
**▲** VDP NA when using Kearney altimeter setting.

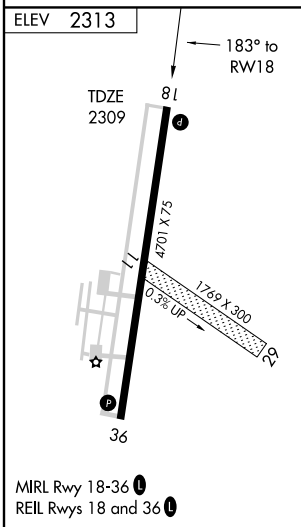
MISSED APPROACH: Climb to 3900 direct BULLIA and hold.

AWOS-3 <b>121.325</b>	DENVER CENTER <b>132.7 397.85</b>	UNICOM <b>122.8 (CTAF) 0</b>
--------------------------	--------------------------------------	---------------------------------

NC-2, 22 OCT 2009 to 19 NOV 2009



NC-2, 22 OCT 2009 to 19 NOV 2009



3900	BULLIA	LEGIC	YETUP	5 NM Holding Pattern
* LNAV only		* 1.1 NM to RWY 18	← 183° → 4000	← 183° → 4000
RWY 18		← 183° → 4000	GS 3.00° TCH 40	
1.1		4.0 NM	6.1 NM	
CATEGORY	A	B	C	D
LPV DA	2559-1 250 (300-1)			
LNAV MDA	2680-1 371 (400-1)		2680-1½ 371 (400-1½)	
CIRCLING	2840-1 527 (600-1)	2840-1½ 527 (600-1½)	2880-2 567 (600-2)	

HOLDREGE, NEBRASKA  
Orig 08101

40°27'N-99°20'W

# RNAV (GPS) RWY 18