

CORSICANA, TEXAS

AL-5998 (FAA)

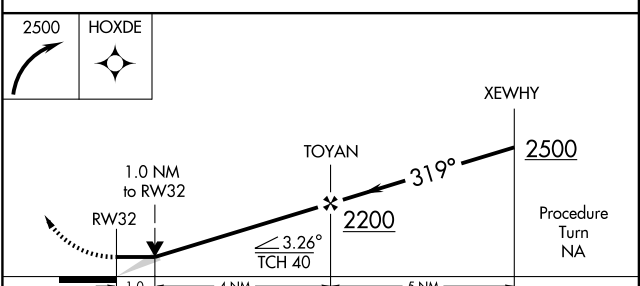
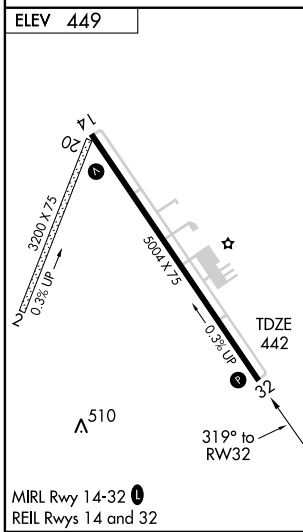
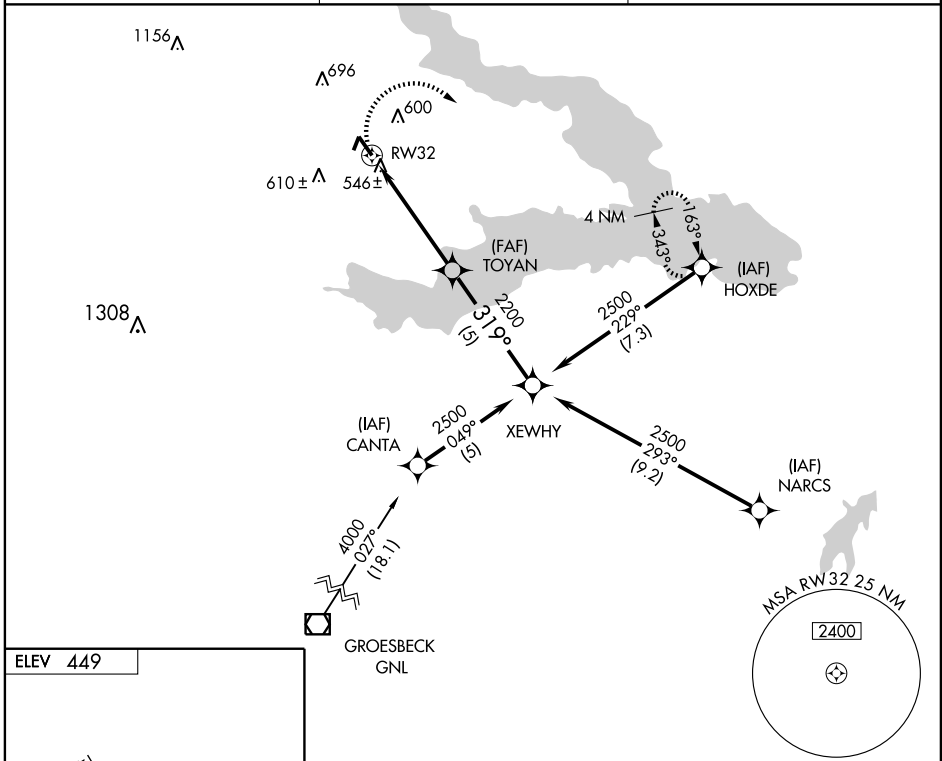
RNAV (GPS) RWY 32

CORSICANA/C. DAVID CAMPBELL FIELD-CORSICANA MUNI (CRS)

APP CRS 319°	Rwy Idg TDZE Apt Elev	5004 442 449
------------------------	-----------------------------	---

▲ NA GPS or RNP-0.3 required, DME/DME RNP-0.3 NA. **MISSED APPROACH:** Climbing right turn to 2500 direct HOXDE and hold.

ASOS 120.675	FORT WORTH CENTER 135.25 265.1	UNICOM 122.8 (CTAF) ①
------------------------	--	---------------------------------



CATEGORY	A	B	C	D
LNAV MDA	800-1 358 (400-1)			800-1¼ 358 (400-1¼)
CIRCLING	860-1 411 (500-1)	900-1 451 (500-1)	900-1½ 451 (500-1½)	1060-2 611 (700-2)

CORSICANA, TEXAS
Orig 09239

CORSICANA/C. DAVID CAMPBELL FIELD-CORSICANA MUNI (CRS)

32°02'N - 96°24'W

RNAV (GPS) RWY 32

SC-2, 22 OCT 2009 to 19 NOV 2009

SC-2, 22 OCT 2009 to 19 NOV 2009